



Technical Specification

Product fiche

Trademark	Sharp	
Model ID	50BJ2IE 50BJ2IO 50BJ3IE 50BJ4IE	55BJ2IE 55BJ2IO 55BJ3IE 55BJ5IE
Energy efficiency class	A+	A
Visible screen size (diagonal)	127 cm / 50 inches	139 CM / 55 inches
On-mode power consumption	70.0 W	110.0 W
Annual energy consumption *1	102 kWh	161 kWh
Standby power consumption *2	<0.50 W	<0.50 W
Off mode power consumption	n/a	n/a
Screen resolution	3840 (H) x 2160 (V)	3840 (H) x 2160 (V)

*1: Energy consumption XYZ kWh per year, based on the power consumption of the television operating 4 hours per day for 365 days. The actual energy consumption will depend on how the television is used.
*2: When the TV is turned off with the remote control/standby button and no function is active.

	50BJ2IE 50BJ2IO 50BJ3IE 50BJ4IE	55BJ2IE 55BJ2IO 55BJ3IE 55BJ5IE
RF	75 ohm Antenna / Analog / DVB / Satellite	
Inputs	3 x HDMI, 3 x USB, 1 x SD card reader, 1 x RJ45 LAN/Ethernet, 1 x Composite/CVBS Video & Component/YPbPr Input, 1 x L/R Audio input for Composite/ CVBS & Component YPbPr	
Sound Outputs	1 x Digital Optical Audio output, 1 x 3.5mm Headphone	
Speaker*/ Amplifier Watts (RMS)	2 x 10 / 2 x 8	
Voltage and power consumption	AC 220V ~ 240V; 50Hz 70/95/115W (home mode/standard/max) (<0.5W in Standby)	AC 220V ~ 240V; 50Hz 110/145/180W (home mode/standard/max) (<0.5W in Standby)
Dimensions including stand (mm)	1124W x 698H x 254D	1239W x 765H x 254D
Net weight (Kgs)	12.2	14.2
Wall Mounting	VESA 200 x 200 (mm)	VESA 400 x 200 (mm)

**Built-in Harman Kardon speaker systems (Full-range speaker and tweeter).

harman/kardon

Harman Kardon is trademark of HARMAN International Industries, Incorporated, registered in the United States and/or other countries.

HDMI

The terms HDMI, HDMI High-Definition Multimedia Interface, and the HDMI Logo are trademarks or registered trademarks of HDMI Licensing Administrator, Inc.

SHARP

Quick Start Set Up Guide

For information on using the TV's features, please refer to the Operating Instructions. (Available online to download.)

Register your manufacturers guarantee

online within 14 days of purchase at

www.registertoday.co.uk/sharp

and enter into a prize draw to

Win a
SHARP
Soundbar

Quick & easy guide for setting up your TV

What is included in the box

Using the remote control

Setting up the TV for the first time - including attaching the stand

Connecting other devices to the Television

Need help setting up or using your TV?

Please contact the UK & ROI Helpline*

Telephone UK 0330 024 0803 or ROI 01443 3323

Online support at: www.umc-uk.co.uk

Email support at: service@umc-uk.co.uk

*Calls to 0330 numbers are charged at standard call rates and are included as part of any bundled minutes with your phone provider.

Calls to the ROI number are charged at the local call rate.

The telephone opening hours are:

Monday to Friday 8.30am to 6pm, Saturday 9am – 5pm.

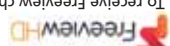
Bank Holidays - 10am to 4pm

Closed Christmas and New Years day



Please save your box/packaging as you will need this in the event of warranty/service repair or support. We are unable to carry out warranty/service if you are unable to package it correctly. The safest way to package your item in the event of warranty/service repair is in its original box/packaging.

Please note that any Freeview HD channels found during tuning will be placed in channel positions above 100. For example, 101 (BBC1 HD), 102 (BBC2 HD) etc. You can check coverage for your postcode at www.freeview.co.uk. Good Freeview coverage area. To receive Freeview channels, in particular Freeview HD channels, you will need a Digital TV aerial and be in a good Freeview coverage area.



This product contains technology subject to certain intellectual property rights of Microsoft. Use or distribution of this technology outside of this product is prohibited without the appropriate license(s) from Microsoft. Content owners use Microsoft PlayReady™ content access technology to protect their intellectual property, including copyrighted content. This device uses PlayReady technology to access PlayReady-protected content and/or WMDRM-protected content. If the device fails to properly enforce restrictions on content usage, content owners may require Microsoft to revoke the device's ability to consume PlayReady-protected content. Revocation should not affect unprotected content or content protected by other content access technologies. Content owners may require you to upgrade PlayReady to access their content. If you decline an upgrade, you will not be able to access content that requires the upgrade.



RF Cable

Should you wish to connect older/analogous devices to your television, you can purchase the necessary cables either from your retailer or at www.umc-uk.co.uk/cables

Additional Accessories

- 1 x Quick Start Guide
- 1 x Remote Control and 2 x AAA Batteries
- 1 x Safety Leaflet
- 1 x Stand installation pack

Included with this TV are the following accessories

Accessories

To launch the Online Manual, press the [MENU] button and then select Settings>About TV>Help Information>View Online Manual

Online Manual

What is included in the box

If you wish to use your Sky remote to operate the TV's basic functions, you will need a Sky remote control (Revision 9 or later) and you will need to program it with the code 2134. If you wish to use your Sky Q remote to operate the TV's basic functions, you will need to program it with the code 4170.



Sky Remote Code



- 1** ON/OFF - Switch on the TV when in standby or vice versa.
- 2** MUTE - Mute the sound or vice versa.
- 2** NUMBER BUTTONS - 0-9 to select TV channel directly; TV GUIDE - Opens the 7 day TV guide (digital TV mode); - To return to the previous channel viewed.
- 3** VOL (+/-) - To increase/decrease the sound level; PICTURE - Scrolls through picture mode options; SOUND - Scrolls through sound mode options; CH (+/-) - To increase or decrease the channel being watched; MENU - To display OSD menu; EXIT - To exit all menus; (▲/▼/←/→/OK) - Allows you to navigate the on-screen menus and adjust the system settings to your preference; BACK - To go back a previous step; FAV - To display favourites menu.
- 4** INFO - Press once for now/next channel information; TEXT - To enter/exit Text; SUBTITLE - To switch the dialogue at the bottom of the screen (on/off); TV - To switch to Digital Channels; YOUTUBE - Access the YouTube App; NETFLIX - Access the Netflix App; NETFLIX - Access the Aqunos NET+ Smart Portal; RECORD/DVD MENU - Access the USB record function/Access the DVD menu of the DVD inserted (must be set to the DVD source); REC LIST/DVD SETUP - Opens the list of previously recorded items/Access the TV's DVD setup menu (must be set to the DVD source); - To advance forward to the next chapter; - To restart the current chapter; - To stop the playback/Eject Disc; (TO EJECT) - To stop the playback/Eject Disc; - To play in fast forward mode; - To play in fast forward mode; - To play/pause; GOTO - To go to a specific chapter; A-B - Press once to set point, press a second time to point; ANGLE/3D - Select different angle of DVD; REPEAT - To repeat playback.

Using the remote control

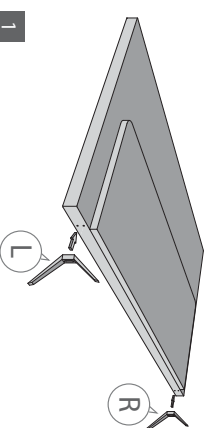
Setting up the TV set for the first time

1 Fitting the stand

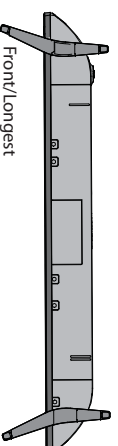
TV panel must be facing downwards.

For the stand installation, there is one type of screw provided as shown below.

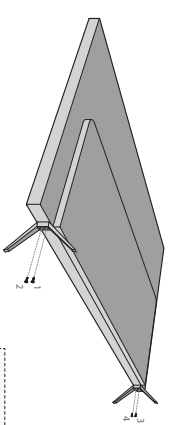
Note: To complete the stand installation you will require a cross head screw driver.



Place the TV set on a flat and clean surface with the panel facing downwards to avoid damage.



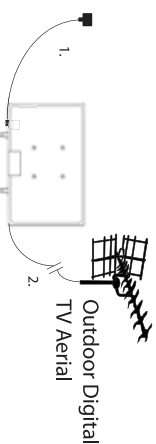
When the stand feet are installed correctly the stand feet will be longest at the front of the TV and shortest at the back with the feet pointing away from each other.



When the stand/feet are in the correct position, secure the feet to the underside of the TV set using 4 screws provided.

2 Connecting your set

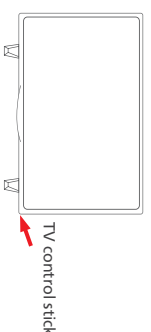
1) Connect the TV to your power socket.



2) If you wish to use the TV to receive Freeview/Saorview channels, connect the RF input from the TV to your outdoor Digital TV aerial. If you do not wish to receive Freeview/Saorview, skip this step.

3 Powering On the TV

TV Control Stick



Switch on the television by pressing the TV control stick located on the TV set.

Remote Control:
Installing Batteries



Insert the batteries supplied into the remote control and press the standby button to power on the TV.

4 First time installation

Basic installation steps are shown below. These may vary slightly depending on model.



Introduction

When the set first turns on, it enters the First Time Installation mode. This can be restarted by restoring the set to default settings in the 'About TV' Menu.

Note: In home mode, the TV will switch off automatically after 4 hours in the event that no buttons are pressed on the TV or remote control. (You can change this by pressing the [MENU] button and then selecting Settings>Time>Auto Standby)



Environment of Use

Home Mode: For normal use, by default it is set to a power saving mode which reduces the energy used by up to 25% (by reducing the power to the LED/LCD panel). This can be changed in the picture mode settings.



Default Source

Select the source which you use the most. If Digital TV (Freeview) is chosen, then at the next step, the set will tune in and default to Digital TV (Freeview). If one of the other sources is selected, then the set will not tune in at this stage and default to that input. If it is required to tune the set in later, press the [MENU] button and then select Settings>Channels



Languages

Select your preferred on-screen display language. This will change the language in which the menus and associated information is displayed in. When set up has been completed, to change this press the [MENU] button and then select Settings > System Menu > Language



Network setup

You can connect the TV to your broadband router or wireless network in order to take advantage of the Smart functions. If you connect the TV to your router using an Ethernet cable (recommended) this step will be skipped.



Tune in Channels

Choose to install terrestrial channels now or later.



Country Selection

Select the correct flag for the country in which the set will be used in. This will enable the set to correctly install the functions applicable in the country of use.



Set Up Netflix

If you have a Netflix account, it can be set up on the television here. Once set up and validated, the First Time Installation returns to the next step.



Support Advice

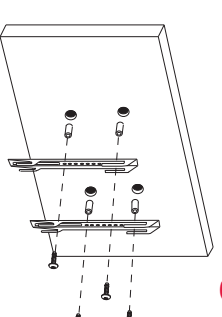
Information regarding support is displayed for a little while. Tuning continues and a progress bar is shown with the number of channels found indicated below. If you are picking up signals from more than one transmitter, you will be requested to select your primary and secondary regions.

Win a
SHARP
Soundbar

Register your manufacturers guarantee online within 14 days of purchase at www.registertoday.co.uk/sharp and enter into a prize draw to win a Sharp Soundbar
Terms and conditions apply. Online registration only.



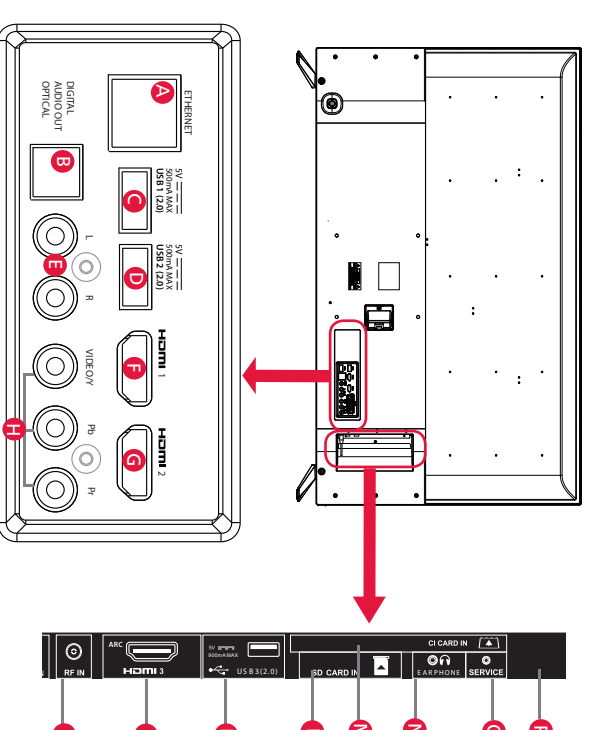
Wall Mounting the TV



1. Remove the four screws that are supplied in the wall mounting holes.
2. The wall mount can now be easily attached to the mounting holes on the rear of the TV.
3. Install the wall mounting bracket to the television as advised by the bracket manufacturer.

The picture shows the use of spacers, which are not applicable to all sets/installations.

Connectivity



A Ethernet/LAN*	Network connection	I SATIN	Satellite input
B Digital Audio	Digital Optical Audio Output	J RF in	RF /TV aerial input
C USB 1	USB port 2.0	K HDMI 3	HDMI Input (ARC)
D USB 2	USB port 2.0	L USB 3	USB port 2.0
E L/R	Audio shared for Video/Composite and component/YpBp	M CI card in	Common interface module
F HDMI 1	HDMI input	N SD	SD card input
G HDMI 2	HDMI input	O Earphones	Earphone input
H Video/VbPr	Video Input (green) and HD input (VbPr)	P Service input	Input is used only by service centres

* The Ethernet/LAN port is used for Freeview HD services and smart functions.