



Technical Specification

	42CI11A 42CI21A 42CI31A 42CI41A 42CI51A 42CI61A
Energy Efficiency Class (SDR)	F
Power consumption (SDR)	48 W
Screen resolution (pixels)	1920 x 1080
Screen Size (diagonal)	106 cm / 42 inches
RF	75 ohm Antenna / Analog / DVB / Satellite
Inputs	3 x HDMI, 2 x USB, 1 x Micro SD card reader, 1 x RJ45 LAN/Ethernet, 1 x Composite/CVBS Video & Component/YPbPr Input, 1 x L/R Audio input for Composite/CVBS & Component YPbPr
Sound Outputs	1 x Digital Optical Audio output, 1 x 3.5mm Headphone
Speaker*/ Amplifier Watts (RMS)	2 x 10 / 2 x 8
Voltage and power consumption	AC 220V ~ 240V; 50Hz 48/70/90W (home mode/standard/max) (<0.5W in Standby)
Dimensions including stand (mm)	952W x 578H x 187D
Net weight (Kgs)	6.7
Wall Mounting	VESA 200 x 200

*Built-in Harman Kardon speaker systems (Full-range speaker and tweeter).



Harman Kardon is trademark of HARMAN International Industries, Incorporated, registered in the United States and/or other countries.



The terms HDMI, HDMI High-Definition Multimedia Interface, and the HDMI Logo are trademarks or registered trademarks of HDMI Licensing Administrator, Inc.



Google, Google Play, YouTube, Android TV and other marks are trademarks of Google LLC.



Manufactured under license from Dolby Laboratories. Dolby, Dolby Audio, and the double-D symbol are trademarks of Dolby Laboratories Licensing Corporation.

SHARP

androidtv

Quick Start Set Up Guide

For information on using the TV's features, please refer to the Operating Instructions. (Available online to download.)

Model Numbers

- 42CI11A
- 42CI21A
- 42CI31A
- 42CI41A
- 42CI51A
- 42CI61A

Register your manufacturers guarantee online within 14 days of purchase at www.registertoday.co.uk/sharp and enter into a prize draw to

Win a SHARP Soundbar

Terms and conditions apply. Online registration only.



Quick & easy guide for setting up your TV

What is included in the box

Using the remote control

Setting up the TV for the first time - including attaching the stand

Connecting other devices to the Television

Need help setting up or using your TV?

Please contact the UK & ROI Helpline*

Telephone UK 0330 024 0803 or ROI 01443 3323

Online support at: www.umc-uk.co.uk

Email support at: service@umc-uk.co.uk

*Calls to 0330 numbers are charged at standard call rates and are included as part of any bundled minutes with your phone provider.

Calls to the ROI number are charged at the local call rate.

The telephone opening hours are:

- Monday to Friday: 8.30am - 6pm
- Saturday: 9am - 5pm
- Bank Holidays: 10am - 4pm

Closed Christmas and New Years day.



Please save your box/packaging as you will need this in the event of warranty/service repair or support. We are unable to carry out warranty/service if you are unable to package it correctly. The safest way to package your item in the event of warranty/service repair is in its original box/packaging.

This product contains technology subject to certain intellectual property rights of Microsoft. Use or distribution of this technology outside of this product is prohibited without the appropriate license(s) from Microsoft. Content owners use Microsoft PlayReady™ content access technology to protect their intellectual property, including copyrighted content. This device uses PlayReady technology to access PlayReady-protected content and/or WMDRM-protected content. If the device fails to properly enforce restrictions on content usage, content owners may require Microsoft to revoke the device's ability to consume PlayReady-protected content. Revocation should not affect unprotected content or content protected by other content access technologies. Content owners may require you to upgrade PlayReady to access their content. If you decline an upgrade, you will not be able to access content that requires the upgrade.

Microsoft PlayReady™



RF Cable

If you don't have the RF cable shown below, then you can purchase one from www.umc-uk.co.uk/cables cable. If you are intending to connect your TV to an RF socket in order to receive Freeview you will need this

Additional Accessories

- 1 x Quick Start Guide
- 1 x Remote Control and 2 x AAA Batteries
- 1 x Safety Leaflet
- 1 x Stand Installation pack

What is included in the box

To launch the online manual, press the HOME button, select Apps from the Home menu, and select "E-Instruction Manual" from the apps list.

Online Manual

Using the remote control



- 1** STANDBY - Switch on the TV when in standby or vice versa. By long pressing of this button, the set will display a menu offering power down option to energy saving standby mode.
- 2** NUMBER BUTTONS - 0-9 to select a TV channel directly.
- 3** VOL (+/-) - To increase/decrease the sound level.
- 4** The Google Assistant - Use your voice to access entertainment, control smart devices, obtain answers on screen, and more.
- 5** HOME - Display the TV Home Menu.
- 6** CH (+/-) - To increase or decrease the channel being watched.
- 7** MENU - Display LIVE TV menu. This button works only in sources (TV, HDMI, Component, etc.). It will not work in the Home Menu.
- 8** INFO - Press once for now/next channel information.
- 9** (▲/▼/◀/▶/OK) - Allows you to navigate the on-screen menus and adjust the system settings to your preference.
- 10** BACK - To go back a previous step.
- 11** EXIT - To exit all menus.
- 12** NETFLIX - Access the Netflix App.
- 13** Prime Video - Access the Prime Video App.
- 14** YouTube - Access the YouTube App.
- 15** Google Play Movies & TV - Access the "Google Play Movies & TV" online service.
- 16** MTS - Opens audio track menu.
- 17** TEXT - To enter/exist teletext.
- 18** SUB - To switch the dialogue at the bottom of the screen (on/off).
- 19** TV - To switch to Live TV.
- 20** MUTE - To play/pause media.
- 21** MUTE - To play in fast forward mode.
- 22** MUTE - To play in fast forward mode.
- 23** MUTE - To stop the playback.
- 24** COLOUR BUTTONS - Execute corresponding function at that time.



Sky Remote Code

If you wish to use your Sky remote to operate the TV's basic functions, you will need a Sky remote control (Revision 9 or later) and your Sky Q remote to operate the TV's basic functions, you will need to program it with the code 4170.

Setting up the TV set for the first time

To obtain a copy of your Operating Instructions, please go to: www.umc-uk.co.uk/instruction-manuals/sharp

1 Fitting the stand

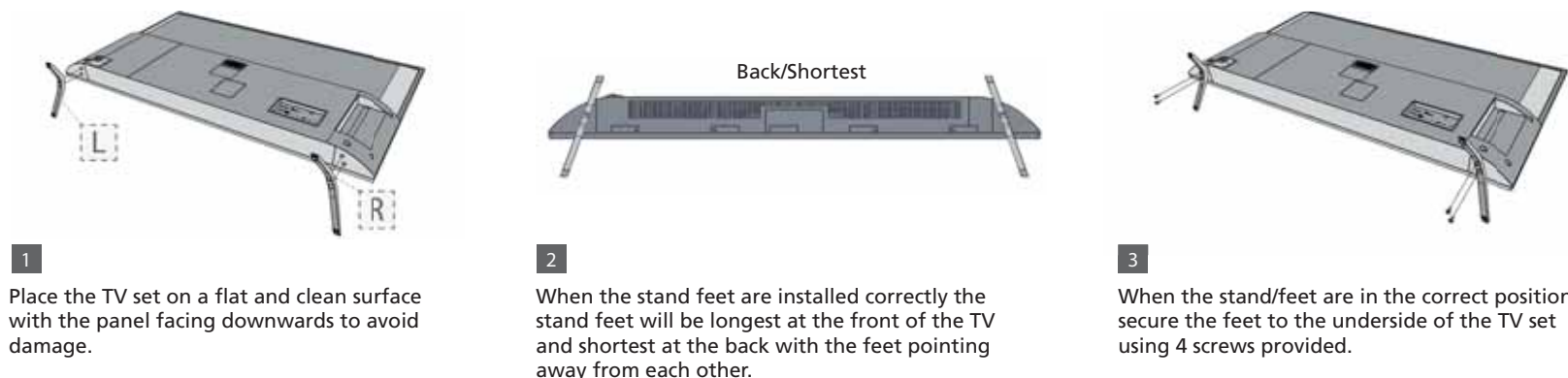
The TV panel must be facing downwards.

For the stand installation, there is one type of screw provided as shown below.

Note: To complete the stand installation you will require a cross head screw driver.



4 x Used for attaching the stand to the TV set (fig.2)



1 Place the TV set on a flat and clean surface with the panel facing downwards to avoid damage.

2 When the stand feet are installed correctly the stand feet will be longest at the front of the TV and shortest at the back with the feet pointing away from each other.

3 When the stand/feet are in the correct position, secure the feet to the underside of the TV set using 4 screws provided.

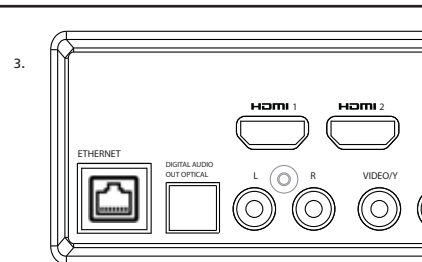
2 Connecting your set



1) Connect the TV to your power socket.

2) If you wish to use the TV to receive Freeview/Saorview channels, connect the RF input from the TV to your outdoor Digital TV aerial. If you do not wish to receive Freeview/Saorview, skip this step.

3) Connect to the internet. Ethernet provides the most stable connection.



3 Powering On the TV

TV Control Stick



Switch on the television by pressing the TV control stick located on the TV set.

Remote Control: Installing Batteries



Insert the batteries supplied into the remote control and press the standby button to power on the TV.

Wall Mounting the TV

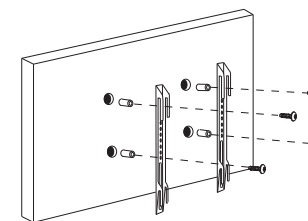


Image for illustration only.

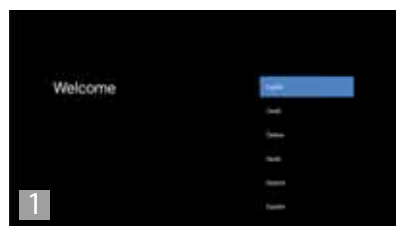
For the dimensions of the VESA mounting, please refer to the Technical Specifications section of this document.

- 1) Remove the four screws that are supplied in the wall mounting holes.
- 2) The wall mount can now be easily attached to the mounting holes on the rear of the TV.
- 3) Install the wall mounting bracket to the television as advised by the bracket manufacturer.

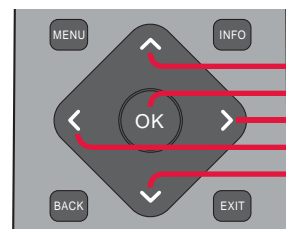
The picture shows the use of spacers, which are not applicable to all sets/installations.

4 First time installation

Basic installation steps are shown below. These may vary slightly depending on your model. Due to Android software updates, the look and feel of the TV start up procedure and subsequent menus can be subject to change.



When the set first turns on, it will ask you to select your preferred on-screen display language. This will change the language in which the menus and associated information is displayed in.



- Press to navigate up
- Press to confirm a selection
- Press to navigate right
- Press to navigate left
- Press to navigate down

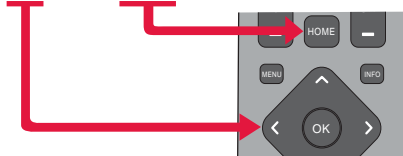
Android Phone users

During the set-up process, you will be prompted to sign-in to your Google account using your pre-installed "Google" app. This set up process will depend upon which model TV you are setting up. Please ensure you have your account details to hand.

5 Pairing the remote

If during the first time installation process the remote was not paired or skipped, then follow the process below to pair your remote with the television.

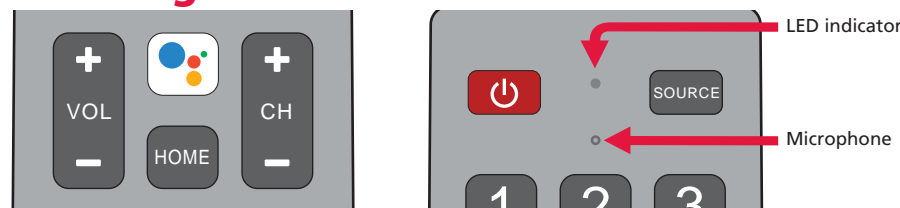
- 1) Turn the set on.
- 2) Press the button on the remote control.
- 3) The LED indicator on the remote will illuminate and the pairing screen will appear on the TV.
- 4) Now press and hold the "Left" and "Home" buttons on the remote simultaneously.



- 5) The LED indicator on the remote control will start to flash.
- 6) Select the detected remote control shown on the screen and press OK.
- 7) Once paired the pairing screen will disappear.

This process will only need to be carried out if the remote is not paired. Once paired, when the button is pressed it will open the Google Assistant screen on the set and activate voice functionality.

6 The Google Assistant



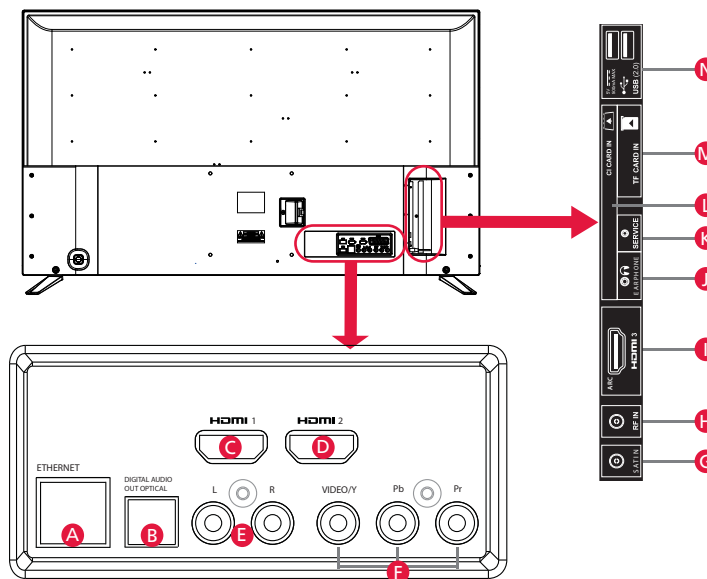
Using the Google Assistant with your voice

Remote controls with the Google Assistant have a Google Assistant dedicated button and a built-in microphone. To use this feature with the Google Assistant remote control, follow the instructions as below.

- 1) Before using the Google Assistant, you will need to pair the remote. Please follow step 5 of this guide to pair your remote to enable the Google Assistant.
- 2) Press the button. The LED indicator on the remote control will illuminate.
- 3) Wait for the on-screen message from the Google Assistant, then speak into the microphone. A good rule of thumb is to have the microphone positioned about 15-30 centimetres away from your mouth.

By speaking into the microphone, you can search for various content or control your connected smart home devices. Speech examples may be displayed on the television screen depending on your model.

Connectivity



A Ethernet/LAN*	Network Connection	H RF In	RF / TV Aerial input
B Digital Audio	Digital Optical Audio Output	I HDMI 3	HDMI Input (ARC)
C HDMI 1	HDMI Input	J Earphones	Earphones Input
D HDMI 2	HDMI Input	K Service Input	Input is used only by service centres
E L/R	Audio shared for video/Composite and component/YpBPr	L CI Card In	Common Interface Module
F Video/YpBPr	Video Input (green) and HD input (Ypbpr)	M TF Card In	Micro SD Card Input
G SAT In	Satellite Input	N USB 2.0	USB 2.0 input x2

* The Ethernet/LAN port is used for Freeview HD services and smart functions.

Win a **SHARP** Soundbar

Register your manufacturers guarantee online within 14 days of purchase at www.registertoday.co.uk/sharp and enter into a prize draw to win a Sharp Soundbar

Terms and conditions apply. Online registration only.

