



SHARP

Quick Start Set Up Guide

For information on using the TV's features, please refer to the Operating Instructions.

Technical Specification

	42CG2K 42CG3K 42CG4K 42CG5K 42CG6K
Energy Efficiency Class (SDR)	F
Power consumption (SDR)	48 W
Screen resolution (pixels)	1920 x 1080
Screen Size (diagonal)	106 cm / 42 inches
RF	75 ohm Antenna / Analog / DVB / Satellite
Inputs	3 x HDMI, 2 x USB, 1 x SCART, 1 x RJ45 LAN/Ethernet, 1 x Composite/CVBS Video & Component/YpPr Input, 1 x L/R Audio input for Composite/CVBS & Component/YpPr
Sound Outputs	1 x Digital Optical Audio output, 1 x 3.5mm Headphone
WiFi frequency range	2412 - 2472 MHz
WiFi transmit power (max)	18.4dBm EIRP (69.2 mW)
Speaker*/ Amplifier Watts (RMS)	2 x 10 / 2 x 8
Voltage and power consumption	AC 220V ~ 240V; 50Hz 48/70/90W (home mode/standard/max) (<0.5W in Standby)
Dimensions including stand (mm)	952W x 575H x 185D
Net weight (Kgs)	6.7
Wall Mounting	VESA 200 x 200 (mm)

*Built-in Harman Kardon speaker systems (Full-range speaker and tweeter).

SOUND SYSTEM BY harman/kardon

Harman Kardon is trademark of HARMAN International Industries, Incorporated, registered in the United States and/or other countries.

HDMI

The terms HDMI, HDMI High-Definition Multimedia Interface, and the HDMI Logo are trademarks or registered trademarks of HDMI Licensing Administrator, Inc.

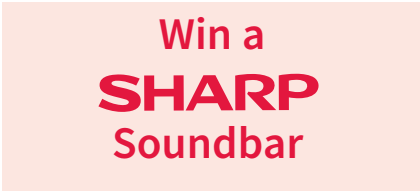
Dolby Audio

Manufactured under license from Dolby Laboratories. Dolby, Dolby Audio, and the double-D symbol are trademarks of Dolby Laboratories Licensing Corporation.

Model Numbers

- 42CG2K
- 42CG3K
- 42CG4K
- 42CG5K
- 42CG6K

Register your manufacturers guarantee online within 14 days of purchase at www.registertoday.co.uk/sharp and enter into a prize draw to



Quick & easy guide for setting up your TV

- What is included in the box
- Using the remote control
- Setting up the TV for the first time - including attaching the stand
- Connecting other devices to the Television

Need help setting up or using your TV?

Please contact the UK & ROI Helpline*
 Telephone UK 0330 024 0803 or ROI 01443 3323
 Online support at: www.umc-uk.co.uk
 Email support at: service@umc-uk.co.uk

*Calls to 0330 numbers are charged at standard call rates and are included as part of any bundled minutes with your phone provider. Calls to the ROI number are charged at the local call rate. The telephone opening hours are:

- Monday to Friday: 8.30am – 6pm
- Saturday: 9am – 5pm
- Bank Holidays: 10am – 4pm

Closed Christmas and New Years day.



Please save your box/packaging as you will need this in the event of warranty/service repair or support. We are unable to carry out warranty/service if you are unable to package it correctly. The safest way to package your item in the event of warranty/service repair is in its original box/packaging.

This product contains technology subject to certain intellectual property rights of Microsoft. Use or distribution of this technology outside of this product is prohibited without the appropriate license(s) from Microsoft. Content owners use Microsoft PlayReady™ content access technology to protect their intellectual property, including copyrighted content. This device uses PlayReady technology to access PlayReady-protected content and/or WMDRM-protected content. If the device fails to properly enforce restrictions on content usage, content owners may require Microsoft to revoke the device's ability to consume PlayReady-protected content. Revocation should not affect unprotected content or content protected by other content access technologies. Content owners may require you to upgrade PlayReady to access their content. If you decline an upgrade, you will not be able to access content that requires the upgrade.

To receive Freewiew channels, in particular Freewiew HD channels, you will need a Digital TV aerial and be in a good Freewiew coverage area. 5. The Freewiew Play Explorer app features a carousel of genres to select from when searching for programmes, such as sport, comedy, dramas and soaps, etc. Content is made up from recommendations of the major broadcasters and offers an alternative means of searching. Note that to use the full functionality of Freewiew Play your set must be connected to the internet.

Please note that any Freewiew HD channels found during tuning will be placed in channel positions above 100. For example, 101 (BBC1 HD), 102 (BBC2 HD) etc. at www.freewiew.co.uk. You can check coverage for your postcode using the Freewiew Play Explorer app. Freewiew Play brings together live TV viewing with "catch up" TV services such as BBC iPlayer, ITV Player, More4 and Demand 5. The Freewiew Play Explorer app features a carousel of genres to select from when searching for programmes, such as sport, comedy, dramas and soaps, etc. Content is made up from recommendations of the major broadcasters and offers an alternative means of searching. Note that to use the full functionality of Freewiew Play your set must be connected to the internet.

Your TV has a built in Personal Video Recording function, meaning you can set up recordings from the TV guide directly onto a PVR ready USB memory stick. You can also pause live TV and rewind/fast forward through your recordings. See our great range of tested and compatible PVR ready USB memory sticks at www.umc-uk.co.uk/usb



USB Memory sticks for recording from Freewiew TV



If you don't have the RF cable shown below, then you can purchase one from www.umc-uk.co.uk/cables if you are intending to connect your TV to an RF socket in order to receive Freewiew you will need this cable.

Additional Accessories

- 1 x Quick Start Guide
- 1 x Stand installation pack
- 1 x Remote Control & 2 x AAA Batteries

What is included in the box

Online Manual
Launch the Online Manual, press the [MENU] button and then select Settings>About TV>Help Information>View Online Manual

Using the remote control



If you wish to use your Sky remote to operate the TV's basic functions, you will need a Sky remote control (Revision 9 or later) and you will need to program it with the code 2134. If you wish to use your Sky Q remote to operate the TV's basic functions, you will need to program it with the code 4170.

Sky Remote Code



- 1. **STANDBY** - Switch on the TV when in standby or vice versa.
- 2. **FREEVIEW PLAY** - Access the Freewiew Play app.
- 3. **NUMBER BUTTONS** - 0-9 to select a TV channel directly. **MUTE** - Mute the sound or vice versa. **TV GUIDE** - Opens the 7 day TV guide (digital TV mode).
- 4. **VOL (+/-)** - To increase/decrease the sound level. **PICTURE** - Scrolls through picture mode options. **SOUND** - Scrolls through sound mode options. **SOURCE** - To display the input/source menu. **CH (+/-)** - To increase or decrease the channel being watched. **MENU** - To display OSD menu. **EXIT** - To exit all menus. **(A/B/OK)** - Allows you to navigate the on-screen menus and adjust the system settings to your preference. **BACK** - To go back a previous step. **FAV** - To display favourites menu.
- 4. **INFO** - Press once for now/next channel information. **TEXT** - To enter/exit Text. **SUBTITLE** - To switch the dialogue at the bottom of the screen (on/off). **TV** - To switch to Digital Channels. **YOUTUBE** - Access the Youtube App. **NETFLIX** - Access the Netflix App. **APPS** - Access the APPS menu. **RECORD** - Access the USB record function. **REC LIST** - Opens the list of previously recorded items. **RESTART** - To restart the current chapter. **▶** - To advance forward to the next chapter. **■** - To stop the playback/Eject Disc (To EJECT the disc press/hold the **■** button for 4 seconds) **▶▶** - To play in fast forward mode **▶▶▶** - To play in fast forward mode **⏸** - To play/pause **◀** - To go to a specific chapter. **GOTO** - To go to a specific chapter. **A-B** - Press once to set point, press a second time to return to point. **ANGLE** - Select different angle of DVD. **REPEAT** - To repeat playback.

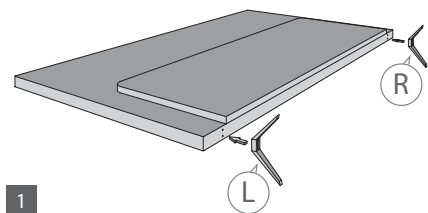
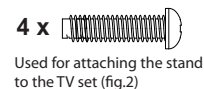
Setting up the TV set for the first time

To obtain a copy of your Operating Instructions, please go to: www.umc-uk.co.uk/instruction-manuals/sharp

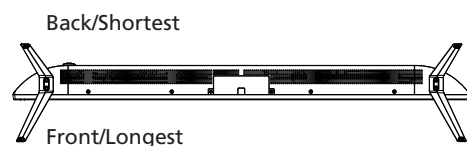
1 Fitting the stand

TV panel must be facing downwards.

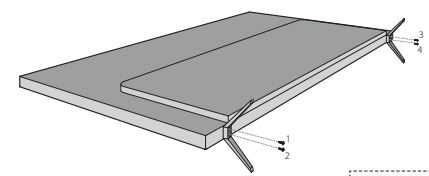
For the stand installation, there is one type of screw provided as shown below. To complete the stand installation you will require a cross head screw driver. Place the TV set on a flat and clean surface with the panel facing downwards to avoid damage.



1 Place the TV set on a flat and clean surface with the panel facing downwards to avoid damage.



2 When the stand feet are installed correctly the stand feet will be longest at the front of the TV and shortest at the back with the feet pointing away from each other.



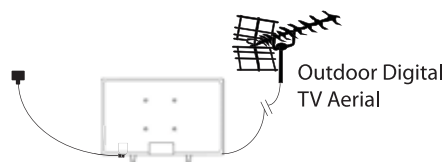
3 When the stand/feet are in the correct position, secure the feet to the underside of the TV set using 4 screws provided.

Win a SHARP Soundbar

Register your manufacturers guarantee online within 14 days of purchase at www.registertoday.co.uk/sharp and enter into a prize draw to win a Sharp Soundbar. Terms and conditions apply. Online registration only.



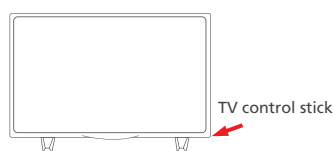
2 Connecting your set



- 1) Connect the TV to your power socket.
- 2) If you wish to use the TV to receive Freeview/Saorview channels, connect the RF input from the TV to your outdoor Digital TV aerial. If you do not wish to receive Freeview/Saorview, skip this step.

3 Powering On the TV

TV Control Stick



Switch on the television by pressing the TV control stick located on the TV set.

Remote Control: Installing Batteries



Insert the batteries supplied into the remote control and press the standby button to power on the TV.

Wall Mounting the TV

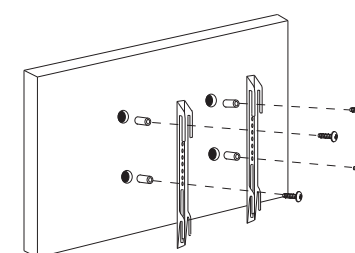


Image for illustration only.

1. Remove the four screws that are supplied in the wall mounting holes.
2. The wall mount can now be easily attached to the mounting holes on the rear of the TV.
3. Install the wall mounting bracket to the television as advised by the bracket manufacturer.

The picture shows the use of spacers, which are not applicable to all sets/installations.

4 First time installation

Basic installation steps are shown below. These may vary slightly depending on model.



1 Introduction

When the set first turns on, it enters the First Time Installation mode. This can be restarted by restoring the set to default settings in the 'About TV' Menu.

Note: In home mode, the TV will switch off automatically after 4 hours in the event that no buttons are pressed on the TV or remote control. (You can change this by pressing the [MENU] button and then selecting Settings>Time>Auto Standby)



4 Environment of Use

Home Mode: For normal use, by default it is set to a power saving mode which reduces the energy used by up to 25% (by reducing the power to the LED/LCD panel). This can be changed in the picture mode settings.



7 Default Source

Select the source which you use the most. If Digital TV (Freeview) is chosen, then at the next step, the set will tune in and default to Digital TV (Freeview). If one of the other sources is selected, then the set will not tune in at this stage and default to that input. If it is required to tune the set in later, press the [MENU] button and then select Settings>Channels



2 Languages

Select your preferred on-screen display language. This will change the language in which the menus and associated information is displayed in. When set up has been completed, to change this press the [MENU] button and then select Settings > System Menu > Language



5 Network setup

You can connect the TV to your broadband router or wireless network in order to take advantage of the Smart functions. If you connect the TV to your router using an Ethernet cable (recommended) this step will be skipped.



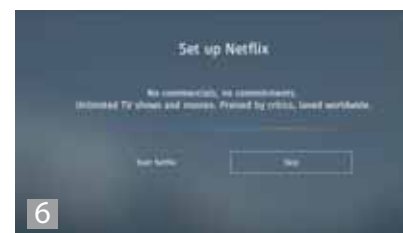
8 Tune in Channels

Choose to install terrestrial channels now or later.



3 Country Selection

Select the correct flag for the country in which the set will be used in. This will enable the set to correctly install the functions applicable in the country of use.



6 Set Up Netflix

If you have a Netflix account, it can be set up on the television here. Once set up and validated, the First Time Installation returns to the next step.

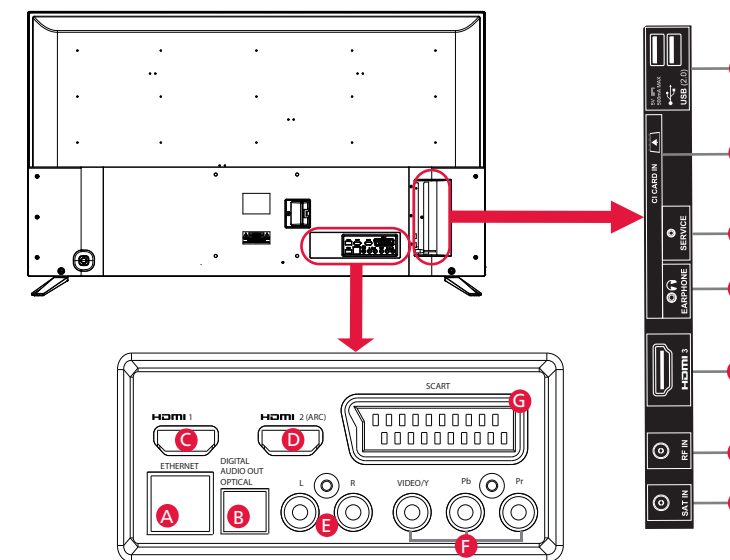


9 Support Advice

Information regarding support is displayed for a little while. Tuning continues and a progress bar is shown with the number of channels found indicated below.

If you are picking up signals from more than one transmitter, you will be requested to select your primary and secondary regions.

Connectivity



A	Ethernet/LAN*	Network connection	H	SAT In	Satellite Input
B	Digital Audio	Digital Optical Audio Output	I	RF in	RF / TV aerial input
C	HDMI 1	HDMI input	J	HDMI 3	HDMI input
D	HDMI 2	HDMI input (ARC)	K	Earphones	Earphone input
E	L/R	Audio shared for Video/Composite and component/YPbPr	L	Service Input	Input is used only by service centres
F	Video/YPbPr	Video Input (green) and HD input (Ypbpr)	M	CI card in	Common interface module
G	SCART	SCART input	N	USB 2.0	USB port 2.0

* The Ethernet/LAN port is used for Digital TV services and smart functions.