



# Technical Specification

	32BC2IE 32BC2IO	40BG2IE
Energy Efficiency Class	F	F
Power Consumption	31 W	45 W
Screen Resolution (pixels)	1366 x 768	1920 x 1080
Screen Size (diagonal)	81 cm / 32 inches	102 cm / 40 inches
RF	75 ohm Antenna / Analog / DVB	
Inputs	3 x HDMI, 2 x USB, 1 x SCART, 1 x RJ45 LAN/Ethernet, 1 x Composite/CVBS Video & Component/YPbPr Input, 1 x L/R Audio input for Composite/CVBS & Component/YPbPr	
Sound Outputs	1 x Digital Optical Audio output, 1 x 3.5mm Headphone	
Speaker*/ Amplifier Watts (RMS)	2 x 10 / 2 x 8	
Voltage and power consumption	AC 220V ~ 240V; 50Hz 31/45/70W (home mode/standard/ max) (<0.5W in Standby)	AC 220V ~ 240V; 50Hz 45/65/80W (home mode/standard/ max) (<0.5W in Standby)
Dimensions including stand (mm)	730W x 470H x 179D	914W x 575H x 199D
Net weight (Kgs)	4.6	6.8
Wall Mounting	VESA 200 x 100 (mm)	VESA 200 x 200 (mm)

\*Built-in Harman Kardon speaker systems (Full-range speaker and tweeter).



Harman Kardon is trademark of HARMAN International Industries, Incorporated, registered in the United States and/or other countries.



The terms HDMI, HDMI High-Definition Multimedia Interface, and the HDMI Logo are trademarks or registered trademarks of HDMI Licensing Administrator, Inc.



Manufactured under license from Dolby Laboratories. Dolby, Dolby Audio, and the double-D symbol are trademarks of Dolby Laboratories Licensing Corporation.



# Quick Start Set Up Guide

For information on using the TV's features, please refer to the Operating Instructions. (Available online to download.)

## Model Numbers

32BC2IE

32BC2IO

40BG2IE

Register your manufacturers guarantee online within 14 days of purchase at [www.registertoday.co.uk/sharp](http://www.registertoday.co.uk/sharp) and enter into a prize draw to



## Quick & easy guide for setting up your TV

What is included in the box

Using the remote control

Setting up the TV for the first time - including attaching the stand

Connecting other devices to the Television

## Need help setting up or using your TV?

Please contact the UK & ROI Helpline\*

Telephone UK 0330 024 0803 or ROI 01443 3323

Online support at: [www.umc-uk.co.uk](http://www.umc-uk.co.uk)

Email support at: [service@umc-uk.co.uk](mailto:service@umc-uk.co.uk)

\*Calls to 0330 numbers are charged at standard call rates and are included as part of any bundled minutes with your phone provider. Calls to the ROI number are charged at the local call rate. The telephone opening hours are:

Monday to Friday: 8.30am – 6pm  
Saturday: 9am – 5pm  
Bank Holidays: 10am – 4pm

Closed Christmas and New Years day.



## Sky Remote Code

If you wish to use your Sky remote to operate the TV's basic functions, you will need a Sky remote control (Revision 9 or later) and you will need to program it with the code 2134. If you wish to use your Sky Q remote to operate the TV's basic functions, you will need to program it with the code 4170.



- 1 ON/OFF** - switch on the TV when in standby or vice versa. MUTE - Mute the sound or vice versa.
- 2 NUMBER BUTTONS** - 0-9 to select a TV channel directly. TV GUIDE - Opens the 7 day TV guide (digital TV mode). To return to the previous channel viewed.
- 3 VOL (+/-)** - To increase/decrease the sound level. PICTURE - Scrolls through picture mode options. SOUND - Scrolls through sound mode options. SOURCE - To display the input/source menu. CH (+/-) - To increase or decrease the channel being watched. MENU - To display OSD menu. EXIT - To exit all menus. (A/+/-/OK) - Allows you to navigate the on-screen menus and adjust the system settings to your preference. BACK - To go back a previous step. FAV - To display favourites menu.
- 4 INFO** - Press once for now/next channel information. Press twice for information about the current programme. TEXT - To enter/exit Text. SUBTITLE - To switch the dialogue at the bottom of the screen (on/off). TV - To switch to Digital Channels. YOUTUBE - Access the Youtube App. NETFLIX - Access the Netflix App. NET+ - Access the Aquos NET+ Smart Portal. RECORD/DVD MENU - Access the USB record function/Access the DVD menu of the DVD inserted (must be set to the DVD source). REC LIST/DVD SETUP - Opens the list of previously recorded items/Access the TV's DVD setup menu (must be set to the DVD source).
  - Left arrow - To restart the current chapter
  - Right arrow - To advance forward to the next chapter
  - Stop - To stop the playback/Eject Disc
  - Play/Pause - To play in fast forward mode (To EJECT the disc press/hold the button for 4 seconds)
  - Fast Forward - To play in fast forward mode
  - Play/Pause - To play/pause
  - Stop - To go to a specific chapter
  - A-B - Press once to set point, press a second time to return to point.
  - ANGLE/3D - Select different angle of DVD.
  - REPEAT - To repeat playback.

# What is included in the box

## Additional Accessories

- 1 x Quick Start Guide
- 1 x Stand Installation pack
- 1 x Remote Control & 2 x AAA Batteries
- 1 x Safety Leaflet



RF Cable

Should you wish to connect older/analogue devices to your television, you can purchase the necessary cables either from your retailer or at [www.umc-uk.co.uk/cables](http://www.umc-uk.co.uk/cables)

## Accessories

Included with this TV are the following accessories

To launch the Online Manual, press the [MENU] button and then select Settings>About TV>Help Information>View Online Manual

# Online Manual

# Using the remote control

Please save your box/packaging as you will need this in the event of warranty/service repair or support. We are unable to carry out warranty/service if you are unable to package it correctly. The safest way to package your item in the event of warranty/service repair is in its original box/packaging.

This product contains technology subject to certain intellectual property rights of Microsoft. Use or distribution of this technology outside of this product is prohibited without the appropriate license(s) from Microsoft. Content owners use Microsoft PlayReady™ content access technology to protect their intellectual property, including copyrighted content. This device uses PlayReady technology to access PlayReady-protected content and/or WMDRM-protected content. If the device fails to properly enforce restrictions on content usage, content owners may require Microsoft to revoke the device's ability to consume PlayReady-protected content. Revocation should not affect unprotected content or content protected by other content access technologies. Content owners may require you to upgrade PlayReady to access their content. If you decline an upgrade, you will not be able to access content that requires the upgrade.

# Setting up the TV set for the first time

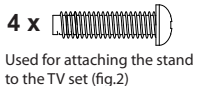
To obtain a copy of your Operating Instructions, please go to: [www.umc-uk.co.uk/instruction-manuals/sharp](http://www.umc-uk.co.uk/instruction-manuals/sharp)

## 1 Fitting the stand

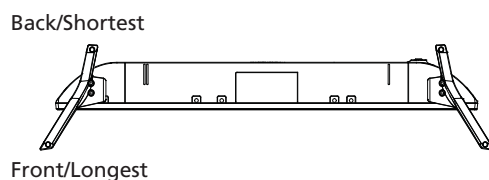
TV panel must be facing downwards.

For the stand installation, there is one type of screw provided as shown below.

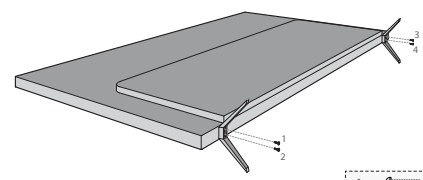
**Note:** To complete the stand installation you will require a cross head screw driver.



**1** Place the TV set on a flat and clean surface with the panel facing downwards to avoid damage.



**2** When fitting the feet, the longest part of the foot needs to be at the front of the set. In addition these should be pointing away from each other as shown in the picture above.



**3** When the stand/feet are in the correct position, secure the feet to the underside of the TV set using 4 screws provided.

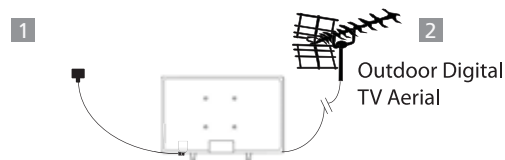
## Win a SHARP Soundbar

Register your manufacturers guarantee online within 14 days of purchase at [www.registertoday.co.uk/sharp](http://www.registertoday.co.uk/sharp) and enter into a prize draw to win a Sharp Soundbar

Terms and conditions apply. Online registration only.



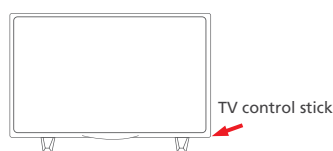
## 2 Connecting your set



- 1 Connect the TV to your power socket.
- 2 If you wish to use the TV to receive Freeview/Saorview channels, connect the RF input from the TV to your outdoor Digital TV aerial. If you do not wish to receive Freeview/Saorview, skip this step.

## 3 Powering On the TV

TV Control Stick



Switch on the television by pressing the TV control stick located on the TV set.

Remote Control: Installing Batteries



Insert the batteries supplied into the remote control and press the standby button to power on the TV.

## Wall Mounting the TV

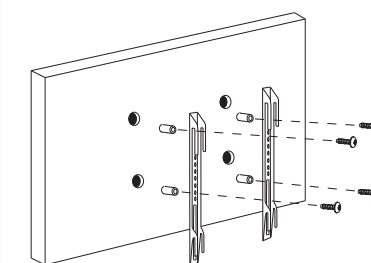


Image for illustration only.

1. Remove the four screws that are supplied in the wall mounting holes.
2. The wall mount can now be easily attached to the mounting holes on the rear of the TV.
3. Install the wall mounting bracket to the television as advised by the bracket manufacturer.

The picture shows the use of spacers, which are not applicable to all sets/installations.

## 4 First time installation

Basic installation steps are shown below. These may vary slightly depending on model.



Introduction

When the set first turns on, it enters the First Time Installation mode. This can be restarted by restoring the set to default settings in the 'About TV' Menu.

**Note:** In home mode, the TV will switch off automatically after 4 hours in the event that no buttons are pressed on the TV or remote control. (You can change this by pressing the [MENU] button and then selecting Settings>Time>Auto Standby)



Environment of Use

**Home Mode:** For normal use, by default it is set to a power saving mode which reduces the energy used by up to 25% (by reducing the power to the LED/LCD panel). This can be changed in the picture mode settings.



Default Source

Select the source which you use the most. If Digital TV (Freeview) is chosen, then at the next step, the set will tune in and default to Digital TV (Freeview). If you select another source, then the set will not tune in at this stage and default to that input. If it is required to tune the set in later, press the [MENU] button and then select Settings>Channels



Languages

Select your preferred on-screen display language. This will change the language in which the menus and associated information is displayed in. When set up has been completed, to change this press the [MENU] button and then select Settings > System Menu > Language



Network setup

You can connect the TV to your broadband router or wireless network in order to take advantage of the Smart functions. If you connect the TV to your router using an Ethernet cable (recommended) this step will be skipped.



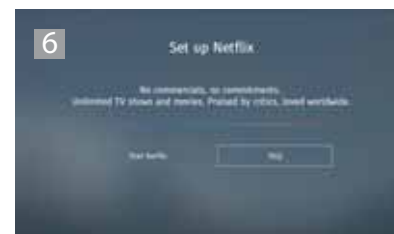
Tune in Channels

Choose to install terrestrial channels now or later.



Country Selection

Select the correct flag for the country in which the set will be used in. This will enable the set to correctly install the functions applicable in the country of use.



Set Up Netflix

If you have a Netflix account, it can be set up on the television here. Once set up and validated, the First Time Installation returns to the next step.

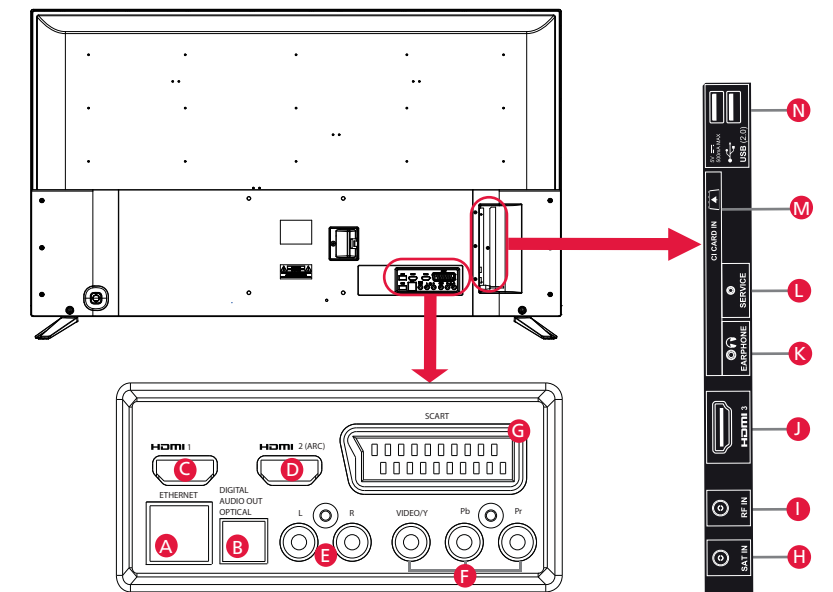


Support Advice

Information regarding support is displayed for a little while. Tuning continues and a progress bar is shown with the number of channels found indicated below.

If you are picking up signals from more than one transmitter, you will be requested to select your primary and secondary regions.

## Connectivity



<b>A</b>	Ethernet/LAN*	Network connection	<b>H</b>	SAT In	Satellite Input
<b>B</b>	Digital Audio	Digital Optical Audio Output	<b>I</b>	RF in	RF / TV aerial input
<b>C</b>	HDMI 1	HDMI input	<b>J</b>	HDMI 3	HDMI input
<b>D</b>	HDMI 2	HDMI input (ARC)	<b>K</b>	Earphones	Earphone input
<b>E</b>	L/R	Audio shared for Video/Composite and component/YPbPr	<b>L</b>	Service Input	Input is used only by service centres
<b>F</b>	Video/YPbPr	Video Input (green) and HD input (Ypbpr)	<b>M</b>	CI card in	Common interface module
<b>G</b>	SCART	SCART input	<b>N</b>	USB 2.0	USB port 2.0

\* The Ethernet/LAN port is used for Freeview HD services and smart functions.