



Technical Specification

	32BI2KA 32BI3KA 32BI4KA 32BI5KA 32BI6KA	32BI2KAF 32BI3KAF 32BI4KAF 32BI5KAF 32BI6KAF	40BI2KA 40BI3KA 40BI4KA 40BI5KA 40BI6KA
Energy Efficiency Class (SDR)	F	F	F
Power consumption (SDR)	31 W	31 W	45 W
Screen resolution (pixels)	1366 x 768	1920 x 1080	1920 x 1080
Screen Size (diagonal)	81 cm / 32 inches	81 cm / 32 inches	101 cm / 40 inches
RF	75 ohm Antenna / Analog / DVB / Satellite		
Inputs	3 x HDMI, 2 x USB, 1 x Micro SD card reader, 1 x RJ45 LAN/Ethernet, 1 x Composite/CVBS Video & Component/YPbPr Input, 1 x L/R Audio input for Composite/CVBS & Component YPbPr		
Sound Outputs	1 x Digital Optical Audio output, 1 x 3.5mm Headphone		
Speaker*/ Amplifier Watts (RMS)	2 x 10 / 2 x 8		
Voltage and power consumption	AC 220V ~ 240V; 50Hz 31/45/70W (home mode/standard/max) (<0.5W in Standby)	AC 220V ~ 240V; 50Hz 31/45/70W (home mode/standard/max) (<0.5W in Standby)	
Dimensions including stand (mm)	730W x 464H x 160D	914W x 575H x 188D	
Net weight (Kgs)	4.6	6.8	
Wall Mounting	VESA 200 x 100 (mm)	VESA 200 x 200 (mm)	

*Built-in Harman Kardon speaker systems (Full-range speaker and tweeter).



Harman Kardon is trademark of HARMAN International Industries, Incorporated, registered in the United States and/or other countries.



The terms HDMI, HDMI High-Definition Multimedia Interface, and the HDMI Logo are trademarks or registered trademarks of HDMI Licensing Administrator, Inc.



Google, Google Play, YouTube, Android TV and other marks are trademarks of Google LLC.



Manufactured under license from Dolby Laboratories. Dolby, Dolby Audio, and the double-D symbol are trademarks of Dolby Laboratories Licensing Corporation.

SHARP

androidtv

Quick Start Set Up Guide

For information on using the TV's features, please refer to the Operating Instructions. (Available online to download.)

Model Numbers

32BI2KA 32BI2KAF 40BI2KA
 32BI3KA 32BI3KAF 40BI3KA
 32BI4KA 32BI4KAF 40BI4KA
 32BI5KA 32BI5KAF 40BI5KA
 32BI6KA 32BI6KAF 40BI6KA

Register your manufacturers guarantee online within 14 days of purchase at

www.registertoday.co.uk/sharp and enter into a prize draw to

Win a
SHARP
 Soundbar

Terms and conditions apply. Online registration only.



Quick & easy guide for setting up your TV

What is included in the box

Using the remote control

Setting up the TV for the first time - including attaching the stand

Connecting other devices to the Television

Need help setting up or using your TV?

Please contact the UK & ROI Helpline*

Telephone UK 0330 024 0803 or ROI 01443 3323

Online support at: www.umc-uk.co.uk

Email support at: service@umc-uk.co.uk

*Calls to 0330 numbers are charged at standard call rates and are included as part of any bundled minutes with your phone provider.

Calls to the ROI number are charged at the local call rate.

The telephone opening hours are:

Monday to Friday: 8.30am - 6pm
 Saturday: 9am - 5pm
 Bank Holidays: 10am - 4pm

Closed Christmas and New Years day



Please save your box/packaging as you will need this in the event of warranty/service repair or support. We are unable to carry out warranty/service if you are unable to package it correctly. The safest way to package your item in the event of warranty/service repair is in its original box/packaging.

Freeview Play
 To receive Freeview channels, in particular Freeview HD channels, you will need a Digital TV aerial and be in a good Freeview coverage area.
 5. The Freeview Play Explore app features a carousel of genres to select from when searching for programmes, such as sport, comedy, dramas and soaps, etc. Content is made up from recommendations of the major broadcasters and offers an alternative means of searching.
 Note that to use the full functionality of Freeview Play your set must be connected to the internet.

This product contains technology subject to certain intellectual property rights of Microsoft. Use or distribution of this technology outside of this product is prohibited without the appropriate license(s) from Microsoft. Content owners use Microsoft PlayReady™ content access technology to protect their intellectual property, including copyrighted content. This device uses PlayReady technology to access PlayReady-protected content and/or WMDRM-protected content. If the device fails to properly enforce restrictions on content usage, content owners may require Microsoft to revoke the device's ability to consume PlayReady-protected content. Revocation should not affect unprocessed content or content protected by other content access technologies. Content owners may require you to upgrade PlayReady to access their content. If you decline an upgrade, you will not be able to access content that requires the upgrade.



RF Cable

If you don't have the RF cable shown below, then you can purchase one from www.umc-uk.co.uk/cables cable.
 If you are intending to connect your TV to an RF socket in order to receive Freeview you will need this

Additional Accessories

- 1 x Quick Start Guide
- 1 x Remote Control and 2 x AAA Batteries
- 1 x Safety Leaflet
- 1 x Stand Installation pack

What is included in the box

To launch the online manual, press the HOME button, select Apps from the Home menu, and select "E-Instruction Manual" from the apps list.

Online Manual

Using the remote control

Sky Remote Code
 If you wish to use your Sky remote to operate the TV's basic functions, you will need a Sky remote control (Revision 9 or later) and functions, you will need to program it with the code 2134. If you wish to use your Sky Q remote to operate the TV's basic functions, you will need to program it with the code 4170.



- 1** STANDBY - Switch on the TV when in standby or vice versa. By long pressing of this button, the set will display a menu offering power down option to energy saving standby mode.
- 2** NUMBER BUTTONS - 0-9 to select a TV channel directly. MUTE - Mute the sound or vice versa. GUIDE - Opens the 7 day TV guide (digital TV mode).
- 3** VOL (+/-) - To increase/decrease the sound level. The Google Assistant - Use your voice to access entertainment, control smart devices, obtain answers on screen, and more. HOME - Display the TV Home Menu. CH (+/-) - To increase or decrease the channel being watched. MENU - Display LIVE TV menu. This button works only in sources (TV, HDMI, Component, etc.). It will not work in the Home Menu. INFO - Press once for now/next channel information. (▲/▼/◀/▶/OK) - Allows you to navigate the on-screen menus and adjust the system settings to your preference. BACK - To go back a previous step. EXIT - To exit all menus.
- 4** NETFLIX App - Access the Netflix App. Prime Video - Access the Prime Video App. YouTube App - Access the YouTube App. Freeview Play - Access the Freeview Play app. service. MTS - Opens audio track menu. TEXT - To enter/exit teletext. SUB - To switch the dialogue at the bottom of the screen (on/off). TV - To switch to Live TV. MI - To play/pause media. MUTE - To play in fast forward mode. MUTE - To play in fast forward mode. COLOUR BUTTONS - Execute corresponding function at that time

Setting up the TV set for the first time

To obtain a copy of your Operating Instructions, please go to: www.umc-uk.co.uk/instruction-manuals/sharp

1 Fitting the stand

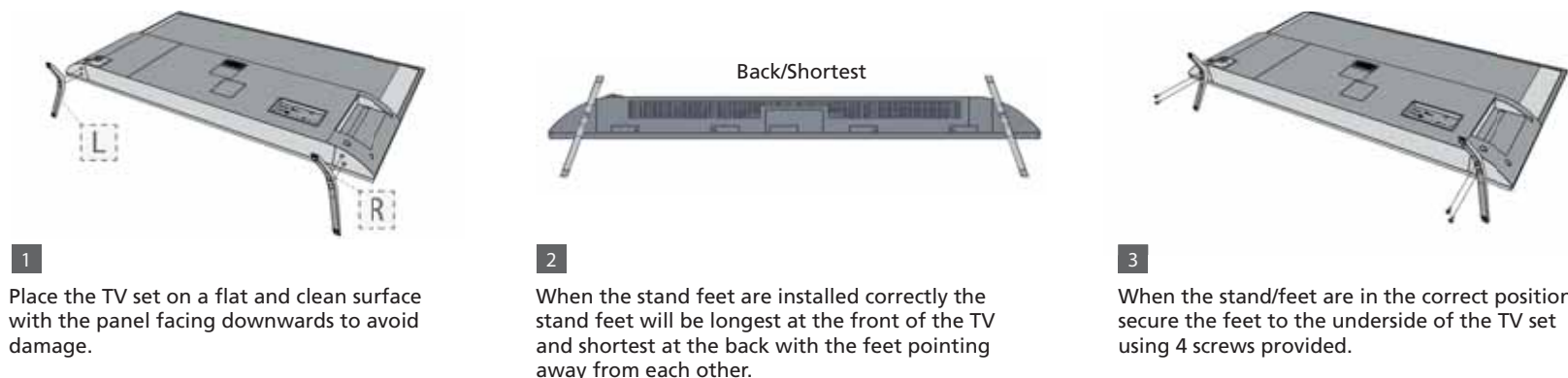
The TV panel must be facing downwards.

For the stand installation, there is one type of screw provided as shown below.

Note: To complete the stand installation you will require a cross head screw driver.



4 x Used for attaching the stand to the TV set (fig.2)



1 Place the TV set on a flat and clean surface with the panel facing downwards to avoid damage.

2 When the stand feet are installed correctly the stand feet will be longest at the front of the TV and shortest at the back with the feet pointing away from each other.

3 When the stand/feet are in the correct position, secure the feet to the underside of the TV set using 4 screws provided.

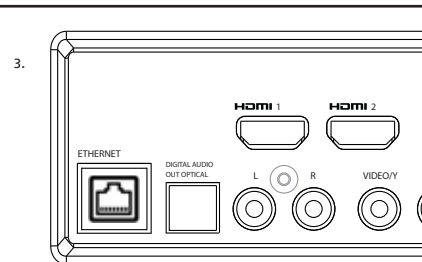
2 Connecting your set



1) Connect the TV to your power socket.

2) If you wish to use the TV to receive Freeview/Saorview channels, connect the RF input from the TV to your outdoor Digital TV aerial. If you do not wish to receive Freeview/Saorview, skip this step.

3) Connect to the internet. Ethernet provides the most stable connection.



3 Powering On the TV

TV Control Stick



Switch on the television by pressing the TV control stick located on the TV set.

Remote Control: Installing Batteries



Insert the batteries supplied into the remote control and press the standby button to power on the TV.

Wall Mounting the TV

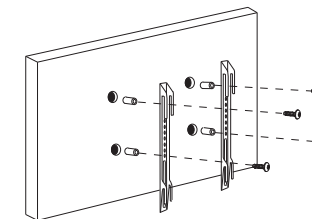


Image for illustration only.

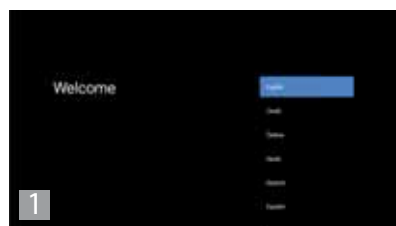
For the dimensions of the VESA mounting, please refer to the Technical Specifications section of this document.

- 1) Remove the four screws that are supplied in the wall mounting holes.
- 2) The wall mount can now be easily attached to the mounting holes on the rear of the TV.
- 3) Install the wall mounting bracket to the television as advised by the bracket manufacturer.

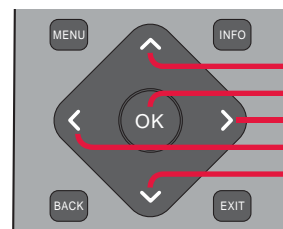
The picture shows the use of spacers, which are not applicable to all sets/installations.

4 First time installation

Basic installation steps are shown below. These may vary slightly depending on your model. Due to Android software updates, the look and feel of the TV start up procedure and subsequent menus can be subject to change.



When the set first turns on, it will ask you to select your preferred on-screen display language. This will change the language in which the menus and associated information is displayed in.



- Press to navigate up
- Press to confirm a selection
- Press to navigate right
- Press to navigate left
- Press to navigate down

Android Phone users

During the set-up process, you will be prompted to sign-in to your Google account using your pre-installed "Google" app. This set up process will depend upon which model TV you are setting up. Please ensure you have your account details to hand.

5 Pairing the remote

If during the first time installation process the remote was not paired or skipped, then follow the process below to pair your remote with the television.

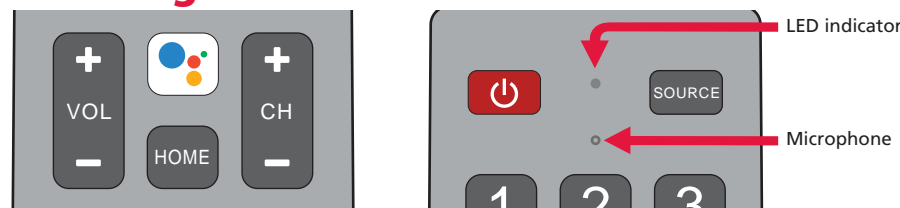
- 1) Turn the set on.
- 2) Press the button on the remote control.
- 3) The LED indicator on the remote will illuminate and the pairing screen will appear on the TV.
- 4) Now press and hold the "Left" and "Home" buttons on the remote simultaneously.



- 5) The LED indicator on the remote control will start to flash.
- 6) Select the detected remote control shown on the screen and press OK.
- 7) Once paired the pairing screen will disappear.

This process will only need to be carried out if the remote is not paired. Once paired, when the button is pressed it will open the Google Assistant screen on the set and activate voice functionality.

6 The Google Assistant



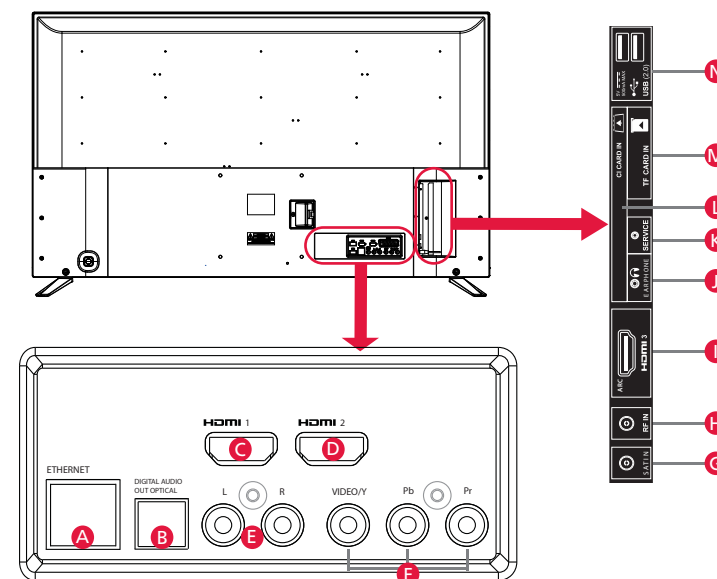
Using the Google Assistant with your voice

Remote controls with the Google Assistant have a Google Assistant dedicated button and a built-in microphone. To use this feature with the Google Assistant remote control, follow the instructions as below.

- 1) Before using the Google Assistant, you will need to pair the remote. Please follow step 5 of this guide to pair your remote to enable the Google Assistant.
- 2) Press the button. The LED indicator on the remote control will illuminate.
- 3) Wait for the on-screen message from the Google Assistant, then speak into the microphone. A good rule of thumb is to have the microphone positioned about 15-30 centimetres away from your mouth.

By speaking into the microphone, you can search for various content or control your connected smart home devices. Speech examples may be displayed on the television screen depending on your model.

Connectivity



A Ethernet/LAN*	Network Connection	H RF In	RF / TV Aerial input
B Digital Audio	Digital Optical Audio Output	I HDMI 3	HDMI Input (ARC)
C HDMI 1	HDMI Input	J Earphones	Earphones Input
D HDMI 2	HDMI Input	K Service Input	Input is used only by service centres
E L/R	Audio shared for video/ Composite and component/YpBPr	L CI Card In	Common Interface Module
F Video/YpBPr	Video Input (green) and HD input (Ypbpr)	M TF Card In	Micro SD Card Input
G SAT In	Satellite Input	N USB 2.0	USB 2.0 input x2

* The Ethernet/LAN port is used for Freeview HD services and smart functions.

Win a **SHARP** Soundbar

Register your manufacturers guarantee online within 14 days of purchase at www.registertoday.co.uk/sharp and enter into a prize draw to win a Sharp Soundbar

Terms and conditions apply. Online registration only.