



Technical Specification

Product Fiche

Trademark	Sharp
Model ID	32BC2K, 32BC2KW, 32BE2K, 32BE2KW, 32BC3K, 32BC4K, 32BC5K
Energy efficiency class	A+
Visible screen size (diagonal)	81 cm / 32 inches
On-mode power consumption	31.0 W
Annual energy consumption *1	45 kWh
Standby power consumption *2	<0.50 W
Off mode power consumption	n/a
Screen resolution	1366 (H) x 768 (V)

*1: Energy consumption XYZ kWh per year, based on the power consumption of the television operating 4 hours per day for 365 days. The actual energy consumption will depend on how the television is used.
 *2: When the TV is turned off with the remote control/standby button and no function is active.

	32BC2K 32BC2KW 32BC3K 32BC4K 32BC5K	32BE2K 32BE2KW
RF	75 ohm Antenna / Analog / DVB	
Inputs	3 x HDMI, 2 x USB, 1 x SCART, 1 x RJ45 LAN/Ethernet, 1 x Composite/CVBS Video & Component/YPbPr Input, 1 x L/R Audio input for Composite/CVBS & Component/YPbPr	
Sound Outputs	1 x Digital Optical Audio output, 1 x 3.5mm Headphone	
WiFi frequency range	2412 - 2472 MHz	
WiFi transmit power (max)	100 mW	
Speaker*/ Amplifier Watts (RMS)	2 x 10 / 2 x 8	
Voltage and power consumption	AC 220V ~ 240V; 50Hz 31/45/70W (home mode/standard/max) (<0.5W in Standby)	AC 220V ~ 240V; 50Hz 31/45/80W (home mode/standard/max) (<0.5W in Standby)
Dimensions including stand (mm)	730W x 468H x 173D	
Net weight (Kgs)	4.6	4.8
Wall Mounting	VESA 200 x 100 (mm)	

*Built-in **Harman Kardon** speaker systems (Full-range speaker and tweeter).

SOUND SYSTEM BY
harman/kardon
 Harman Kardon is trademark of HARMAN International Industries, Incorporated, registered in the United States and/or other countries.

HDMI
 The terms HDMI, HDMI High-Definition Multimedia Interface, and the HDMI Logo are trademarks or registered trademarks of HDMI Licensing Administrator, Inc.

Dolby Audio
 Manufactured under license from Dolby Laboratories. Dolby, Dolby Audio, and the double-D symbol are trademarks of Dolby Laboratories Licensing Corporation.

SHARP

Quick Start Set Up Guide

For information on using the TV's features, please refer to the Operating Instructions.

Model Numbers

32BC2K

32BC2KW

32BE2K

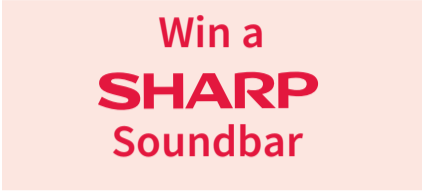
32BE2KW

32BC3K

32BC4K

32BC5K

Register your manufacturers guarantee online within 14 days of purchase at www.registertoday.co.uk/sharp and enter into a prize draw to



Quick & easy guide for setting up your TV

What is included in the box

Using the remote control

Setting up the TV for the first time - including attaching the stand

Connecting other devices to the Television

Need help setting up or using your TV?

Please contact the **UK & ROI Helpline***

Telephone UK 0330 024 0803 or ROI 01443 3323

Online support at: www.umc-uk.co.uk

Email support at: service@umc-uk.co.uk

*Calls to 0330 numbers are charged at standard call rates and are included as part of any bundled minutes with your phone provider. Calls to the ROI number are charged at the local call rate. The telephone opening hours are:

Monday to Friday: 8.30am – 6pm.
 Saturday: 9am – 5pm.
 Bank Holidays: 10am – 4pm.

Closed Christmas and New Years day.



Please save your box/packaging as you will need this in the event of warranty/service repair or support. We are unable to carry out warranty/service if you are unable to package it correctly. The safest way to package your item in the event of warranty/service repair is in its original box/packaging.

This product contains technology subject to certain intellectual property rights of Microsoft. Use or distribution of this technology outside of this product is prohibited without the appropriate license(s) from Microsoft. Content owners use Microsoft PlayReady™ content access technology to protect their intellectual property, including copyrighted content. This device uses PlayReady technology to access PlayReady-protected content and/or WMDRM-protected content. If the device fails to properly enforce restrictions on content usage, content owners may require Microsoft to revoke the device's ability to consume PlayReady-protected content. Revocation should not affect unprotected content or content protected by other content access technologies. Content owners may require you to upgrade PlayReady to access their content. If you decline an upgrade, you will not be able to access content that requires the upgrade.

To receive Freewiew HD channels, in particular Freewiew HD channels, you will need a Digital TV aerial and be in a good Freewiew coverage area. You can check coverage for your postcode at www.freewiew.co.uk. Please note that any Freewiew HD channels found during tuning will be placed in channel positions above 100. For example, 101 (BBC1 HD), 102 (BBC2 HD) etc. Note that to use the full functionality of Freewiew Play your set must be connected to the internet.

Your TV has a built in Personal Video Recording function, meaning you can set up recordings from the TV guide directly onto a PVR ready USB memory stick. You can also pause live TV and rewind/fast forward through your recordings. See our great range of tested and compatible PVR ready USB memory sticks at www.umc-uk.co.uk/usb

If you don't have the RF cable shown below, then you can purchase one from www.umc-uk.co.uk/cables If you are intending to connect your TV to an RF socket in order to receive Freewiew you will need this cable.



What is included in the box

Accessories included with this TV are the following accessories:

- 1 x Quick Start Guide
- 1 x Stand installation pack
- 1 x Safety Leaflet
- 1 x Remote Control & 2 x AAA Batteries

REMOTE CONTROL



Sky Remote Code

If you wish to use your Sky remote to operate the TV's basic functions, you will need a Sky remote control (Revision 9 or later) and you will need to program it with the code 2134. If you wish to use your Sky Q remote to operate the TV's basic functions, you will need to program it with the code 4170.

- 1** STANDBY - Switch on the TV when in standby or vice versa. FREEWIEW PLAY - Access the Freewiew Play app.
- 2** NUMBER BUTTONS - 0-9 to select a TV channel directly. MUTE - Mute the sound or vice versa. TV GUIDE - Opens the 7 day TV guide (digital TV mode).
- 3** VOL (+/-) - To increase/decrease the sound level. PICTURE - Scrolls through picture mode options. SOUND - Scrolls through sound mode options. SOURCE - To display the input/source menu. CH (+/-) - To increase or decrease the channel being watched. MENU - To display OSD menu. EXIT - To exit all menus. (AVR/PI/ON) - Allows you to navigate the on-screen menus and adjust the system settings to your preference. BACK - To go back a previous step. FAV - To display favourites menu.
- 4** INFO - Press once for now/next channel information. TEXT - Press twice for information about the current programme. TV - To enter/exit Text. SUBTITLE - To switch the dialogue at the bottom of the screen (on/off). YOUTUBE - Access the Youtube App. NETFLIX - Access the Netflix App. APPS - Access the APPS menu. RECORD - Access the USB record function. REC LIST - Opens the list of previously recorded items. GOTO - To go to a specific chapter. A-B - Press once to set point, press a second time to return to point. ANGLE - Select different angle of DVD. REPEAT - To repeat playback.

Launch the Online Manual, press the [MENU] button and then select **Settings>About TV>Help Information>View Online Manual**

Setting up the TV set for the first time

To obtain a copy of your Operating Instructions, please go to: www.umc-uk.co.uk/instruction-manuals/sharp

1 Fitting the stand

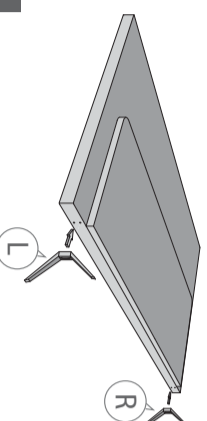
TV panel must be facing downwards.

For the stand installation, there is one type of screw provided as shown below.

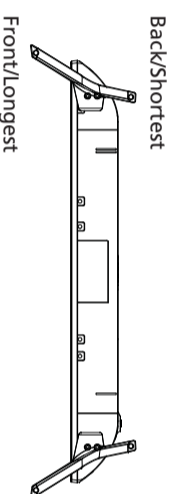
Note: To complete the stand installation you will require a cross head screw driver.



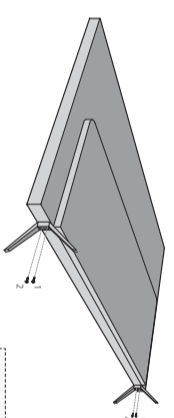
4 x Used for attaching the stand to the TV set (fig.2)



1 Place the TV set on a flat and clean surface with the panel facing downwards to avoid damage.

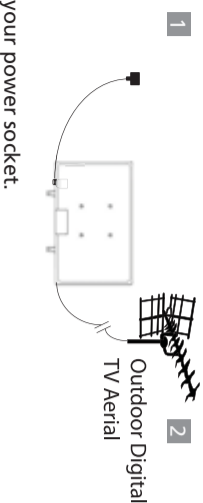


2 When fitting the feet, the longest part of the foot needs to be at the front of the set. In addition these should be pointing away from each other as shown in the picture above.



3 When the stand/feet are in the correct position, secure the feet to the underside of the TV set using 4 screws provided.

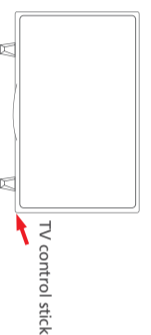
2 Connecting your set



- 1 Connect the TV to your power socket.
- 2 If you wish to use the TV to receive Freeview/Saorview channels, connect the RF input from the TV to your outdoor Digital TV aerial. If you do not wish to receive Freeview/Saorview, skip this step.

3 Powering On the TV

TV Control Stick



Switch on the television by pressing the TV control stick located on the TV set.

Remote Control: Installing Batteries



Insert the batteries supplied into the remote control and press the standby button to power on the TV.

4 First time installation

Basic installation steps are shown below. These may vary slightly depending on model.



1 Introduction

When the set first turns on, it enters the First Time Installation mode. This can be restarted by restoring the set to default settings in the 'About TV' Menu.

Note: In home mode, the TV will switch off automatically after 4 hours in the event that no buttons are pressed on the TV or remote control. (You can change this by pressing the [MENU] button and then selecting Settings>Time>Auto Standby)



4 Environment of Use

Home Mode: For normal use, by default it is set to a power saving mode which reduces the energy used by up to 25% (by reducing the power to the LED/LCD panel). This can be changed in the picture mode settings.



7 Default Source

Select the source which you use the most. If Digital TV (Freeview) is chosen, then at the next step, the set will tune in and default to Digital TV (Freeview). If you select another source, then the set will not tune in at this stage and default to that input. If it is required to tune the set in later, press the [MENU] button and then select Settings>Channels



2 Languages

Select your preferred on-screen display language. This will change the language in which the menus and associated information is displayed in. When set up has been completed, to change this press the [MENU] button and then select Settings > System Menu > Language



5 Network setup

You can connect the TV to your broadband router or wireless network in order to take advantage of the Smart functions. If you connect the TV to your router using an Ethernet cable (recommended) this step will be skipped.



8 Tune in Channels

Choose to install terrestrial channels now or later.



3 Country Selection

Select the correct flag for the country in which the set will be used in. This will enable the set to correctly install the functions applicable in the country of use.



6 Set Up Netflix

If you have a Netflix account, it can be set up on the television here. Once set up and validated, the First Time Installation returns to the next step.



9 Support Advice

Information regarding support is displayed for a little while. Tuning continues and a progress bar is shown with the number of channels found indicated below. If you are picking up signals from more than one transmitter, you will be requested to select your primary and secondary regions.

Wall Mounting the TV

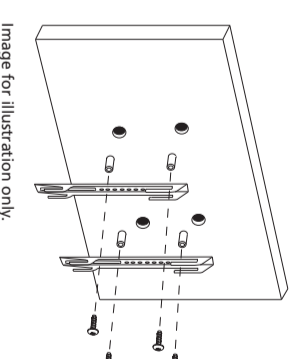
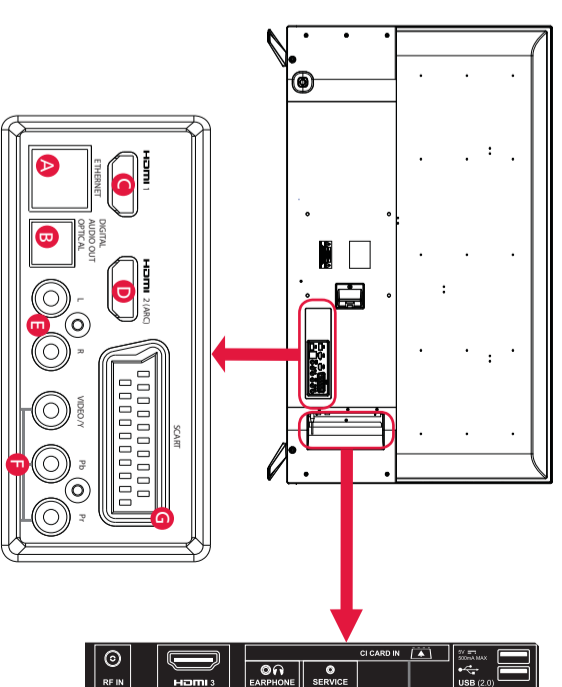


Image for illustration only.

1. Remove the four screws that are supplied in the wall mounting holes.
2. The wall mount can now be easily attached to the mounting holes on the rear of the TV.
3. Install the wall mounting bracket to the television as advised by the bracket manufacturer.

The picture shows the use of spacers, which are not applicable to all sets/installations.

Connectivity



- | | | | |
|------------------------|--|------------------------|---|
| A Ethernet/LAN* | Network connection | H RF in | RF / TV aerial input |
| B Digital Audio | Digital Optical Audio Output | I HDMI 3 | HDMI input |
| C HDMI 1 | HDMI input | J Earphones | Earphone input |
| D HDMI 2 | HDMI input (ARC) | K Service Input | Input is used only by service centres and component Y/Pr/Pb |
| E L/R | Audio input (green and red) Video input (green and HD input (Y/Pr/Pb)) | L CI card in | Common interface module |
| F Video/PIP | | M USB 2.0 | USB port 2.0 |
| G SCART | SCART input | | |

* The Ethernet/LAN port is used for Freeview HD services and smart functions.

Win a **SHARP** Soundbar

Register your manufacturers guarantee online within 14 days of purchase at www.registertoday.co.uk/sharp and enter into a prize draw to win a Sharp Soundbar

Terms and conditions apply. Online registration only.

