



SHARP

Quick Start Set Up Guide

For information on using the TV's features, please refer to the operating Instructions.

Model Numbers

- 32BB1I 32BB5I
- 32BB2I 32BB6I
- 32BB2IW
- 32BB3I
- 32BB3IC
- 32BB4I

Register your manufacturers guarantee online within 14 days of purchase at www.registertoday.co.uk/sharp and enter into a prize draw to



Technical Specification

	32BB1I 32BB2I 32BB2IW 32BB3I 32BB3IC 32BB4I 32BB5I 32BB6I
Energy Efficiency Class (SDR)	F
Power consumption (SDR)	31 W
Screen resolution (pixels)	1366 x 768
Screen Size (diagonal)	81 cm / 32 inches
RF	75 ohm Antenna / Analog / DVB / Satellite
Inputs	3 x HDMI, 2 x USB, 1 x Scart, 1 x RJ45 LAN/Ethernet, 1 x Composite/CVBS Video & Component/YpPr Input, 1 x L/R Audio input for Composite/CVBS & Component YpPr
Sound Outputs	1 x Digital Optical Audio output, 1 x 3.5mm Headphone
Speaker*/ Amplifier Watts (RMS)	2 x 10 / 2 x 8
Voltage and power consumption	AC 220V ~ 240V; 50Hz 31/45/70W (home mode/standard/max) (<0.5W in Standby)
Dimensions including stand (mm)	724W x 464H x 156D
Net weight (Kgs)	4.6
Wall Mounting	VESA 200 x 100 (mm)

*Built-in Harman Kardon speaker systems (Full-range speaker and tweeter).



Harman Kardon is trademark of HARMAN International Industries, Incorporated, registered in the United States and/or other countries.



The terms HDMI, HDMI High-Definition Multimedia Interface, and the HDMI Logo are trademarks or registered trademarks of HDMI Licensing Administrator, Inc.



Manufactured under license from Dolby Laboratories. Dolby, Dolby Audio, and the double-D symbol are trademarks of Dolby Laboratories Licensing Corporation.

Quick & easy guide for setting up your TV

What is included in the box

Using the remote control

Setting up the TV for the first time - including attaching the stand

Connecting other devices to the Television

Need help setting up or using your TV?

Please contact the UK & ROI Helpline*

Telephone UK 0330 024 0803 or ROI 01443 3323

Online support at: www.umc-uk.co.uk

Email support at: service@umc-uk.co.uk

*Calls to 0330 numbers are charged at standard call rates and are included as part of any bundled minutes with your phone provider.

Calls to the ROI number are charged at the local call rate.

The telephone opening hours are:

- Monday to Friday: 8.30am - 6pm
- Saturday: 9am - 5pm
- Bank Holidays: 10am - 4pm

Closed Christmas and New Years day.



Sky Remote Code

If you wish to use your Sky remote to operate the TV's basic functions, you will need to program it with the code 2134. If you wish to use your Sky Q remote to operate the TV's basic functions, you will need to program it with the code 4170.



- STANDBY - Switch on TV when in standby or vice versa
MUTE - Mute the sound or vice versa
DTV - Switch to Freview source
RADIO - Switch to radio whilst in Freview source
USB - Switch to USB source
DVD - Switch to DVD source
- NUMBER BUTTONS - 0-9 to select a TV channel directly.
TV GUIDE - Opens the 7 day TV Guide (Freview mode).
To return to the previous channel viewed
- VOL (+/-) - to increase / decrease the sound level
P.MODE - Scrolls through picture mode options
S.MODE - Scrolls through sound mode options
FAV - To display favourite menu
CH (+/-) - To increase or decrease the channel being watched
EXT - To exit all menus
(*)/(-)/OK - Allows you to navigate the on-screen menus and adjust the system setting to your preference
SOURCE - To display the input/source menu
INFO - Press once for now/next channel information.
Press twice for programme information about current programme
- ASPECT - Press repeatedly to cycle through the sleep options
AUDIO - To change the audio language (if available)
SUBTITLE - To switch the dialogue at the bottom of the screen (on/off)
TEXT - To enter/exit text
TEXT HOLD - Hold current page which is displayed (analogue TV)
DISPLAY - To switch off the screen when listening to radio
TEXT/DVD ZOOM - Zoom function for teletext and DVD
DVD MENU/RECORD - Access the DVD Menu or opens the list of what has been previously recorded
DVD SETUP/REC LIST - Opens the DVD Menu or opens the list of what has been previously recorded
GOTO - To go to a specific chapter
A-B - Press once to set a start point, press a second time to set a loop
ANGLE - Select different angles/content on the DVD (if available)
REPEAT - To repeat playback

What is included in the box

Accessories included with this TV are the following accessories

- 1 x Safety Leaflet
- 1 x Remote Control and 2 x AAA Batteries
- 1 x Stand installation pack
- 4 x [Image of screws]
- 1 x L (left)
- 1 x R (right)



RF Cable

If you don't have the RF cable shown below, then you can purchase one from www.umc-uk.co.uk/cables if you are intending to connect your TV to an RF socket in order to receive Freview, you will need this cable.

Please save your box/packaging as you will need this in the event of warranty/service repair or support. We are unable to carry out warranty/service if you are unable to package it correctly. The safest way to package your item in the event of warranty/service repair is in its original box/packaging.

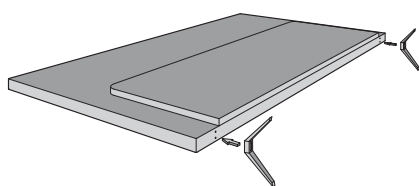
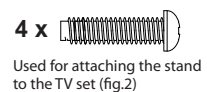
Setting up the TV set for the first time

To obtain a copy of your Operating Instructions, please go to: www.umc-uk.co.uk/instruction-manuals/sharp

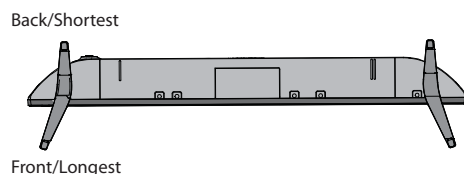
1 Fitting the stand

TV panel must be facing downwards.

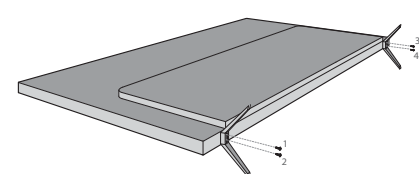
For the stand installation, there is one type of screw provided as shown below. To complete the stand installation you will require a cross head screw driver. Place the TV set on a flat and clean surface with the panel facing downwards to avoid damage.



1 Place the TV set on a flat and clean surface with the panel facing downwards to avoid damage.



2 When the stand feet are installed correctly the stand feet will be longest at the front of the TV and shortest at the back with the feet pointing away from each other.



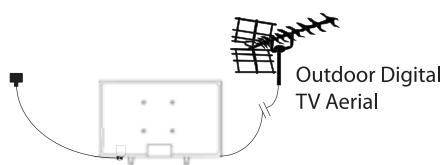
3 When the stand/feet are in the correct position, secure the feet to the underside of the TV set using 4 screws provided.

Win a **SHARP** Soundbar

Register your manufacturers guarantee online within 14 days of purchase at www.registertoday.co.uk/sharp and enter into a prize draw to win a Sharp Soundbar

Terms and conditions apply. Online registration only.

2 Connecting your set



- 1) Connect the TV to your power socket.
- 2) If you wish to use the TV to receive Freeview/Saorview channels, connect the RF input from the TV to your outdoor Digital TV aerial. If you do not wish to receive Freeview/Saorview, skip this step.

3 Powering On the TV

TV Control Stick



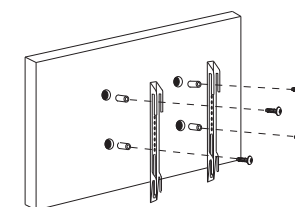
Switch on the television by pressing the TV control stick located on the TV set.

Remote Control: Installing Batteries



Insert the batteries supplied into the remote control and press the standby button to power on the TV.

Wall Mounting the TV



1. Remove the four screws that are supplied in the wall mounting holes.
2. The wall mount can now be easily attached to the mounting holes on the rear of the TV.
3. Install the wall mounting bracket to the television as advised by the bracket manufacturer.

The picture shows the use of spacers, which are not applicable to all sets/installations.

Image for illustration only.

4 First time installation



Screen 1

When you first turn on the set, you will be welcomed by the First Time Installation screen as shown above.

Language: Select your preferred on-screen display language. This will change the language in which the menus and associated information is displayed in. When the setup has been completed, this can be changed by selecting **Menu > Settings > Language**.



Screen 2

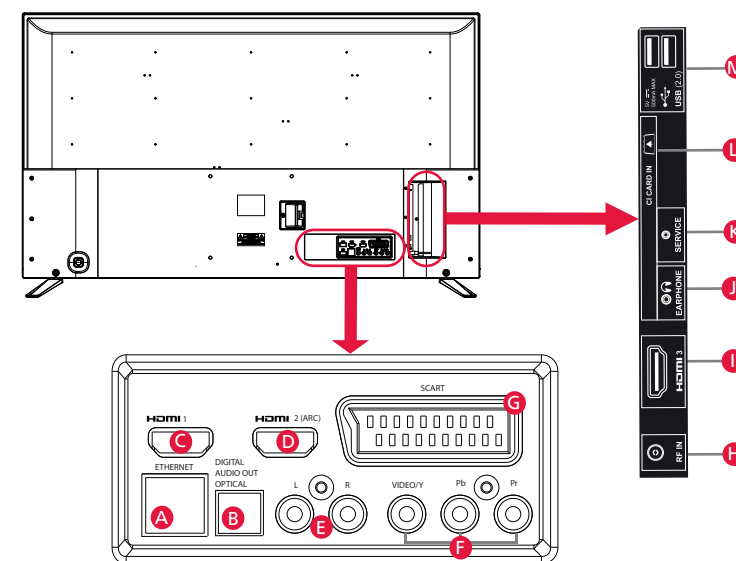
Tuning Mode: Select what you wish to tune via TV's built-in tuner. You can choose from Freeview TV, Analogue TV and ALL (Freeview + Analogue). At the next step, the set will tune in selected option.

Country: Select the correct country in which the set will be used in. This will enable the TV to correctly install the functions applicable in the country of use.

Environment: Use this option to select either Home or Store mode. **HOME MODE** is a power saving mode which reduces the energy used by up to 25% (by reducing the power to the LED/LCD panel). When in **STORE MODE** the picture will be brighter. An on-screen banner showing the sets functionality will appear on the screen after 2 minutes.

Note: In Home Mode, the TV will switch itself to the standby mode after 4 hours in the event that the buttons on the remote control or TV are not used.

Connectivity



A	Ethernet/LAN*	Network connection	H	RF in	RF / TV aerial input
B	Digital Audio	Digital Optical Audio Output	I	HDMI 3	HDMI input
C	HDMI 1	HDMI input	J	Earphones	Earphone input
D	HDMI 2	HDMI input (ARC)	K	Service Input	Input is used only by service centres
E	L/R	Audio shared for Video/Composite and component/YPbPr	L	CI card in	Common interface module
F	Video/YPbPr	Video input (green) and HD input (Ypbpr)	M	USB 2.0	USB port 2.0
G	SCART	SCART input			

* The Ethernet/LAN port is used for Freeview HD services