



# Technical Specification

	24BC01 24BC0IW 24BC0IR	24BE01 24BE0IW 24BE0IR
Energy Efficiency Class (SDR)	F	
Power consumption (SDR)	21 W	
Screen resolution (pixels)	1366 x 768	
Screen Size (diagonal)	60 cm / 24 inches	
RF	75 ohm Antenna / Analog / DVB	
Inputs	2 x HDMI, 2 x USB, 1 x SCART, 1 x Mini Component/YpPr, 1 x Mini AV IN - Composite Video/CVBS and L/R Audio shared for Composite Video and Component/YpPr, 1 x RJ45 LAN/Ethernet	
Sound Outputs	1 x Digital Optical Audio output, 1 x 3.5mm Headphone	
Speaker*/ Amplifier Watts (RMS)	2 x 5 / 2 x 3	
Voltage and power consumption	AC 220V ~ 240V; 50Hz 21/40W (ecomode/max) (<0.5W in Standby)	AC 220V ~ 240V; 50Hz 21/50W (ecomode/max) (<0.5W in Standby)
Dimensions including stand (mm)	560W x 385H x 140D	
Net weight (Kgs)	3.8	4.2
Wall Mounting	VESA 100 x 100 (mm)	

## HDMI

The terms HDMI, HDMI High-Definition Multimedia Interface, and the HDMI Logo are trademarks or registered trademarks of HDMI Licensing Administrator, Inc.

## Dolby Audio

Manufactured under license from Dolby Laboratories. Dolby, Dolby Audio, and the double-D symbol are trademarks of Dolby Laboratories Licensing Corporation.

# SHARP

## Quick Start Set Up Guide

For information on using the TV's features, please refer to the operating Instructions.

### Model Numbers

24BC01

24BC0IW

24BC0IR

24BE01

24BE0IW

24BE0IR

Register your manufacturers guarantee online within 14 days of purchase at [www.registertoday.co.uk/sharp](http://www.registertoday.co.uk/sharp) and enter into a prize draw to



### Quick & easy guide for setting up your TV

What is included in the box

Using the remote control

Setting up the TV for the first time - including attaching the stand

Connecting other devices to the Television

### Need help setting up or using your TV?

Please contact the UK & ROI Helpline\*

Telephone UK 0330 024 0803 or ROI 01443 3323

Online support at: [www.umc-uk.co.uk](http://www.umc-uk.co.uk)

Email support at: [service@umc-uk.co.uk](mailto:service@umc-uk.co.uk)

\*Calls to 0330 numbers are charged at standard call rates and are included as part of any bundled minutes with your phone provider. Calls to the ROI number are charged at the local call rate. The telephone opening hours are:

Monday to Friday: 8.30am – 6pm  
Saturday: 9am – 5pm  
Bank Holidays: 10am – 4pm

Closed Christmas and New Years day.



Please save your box/packaging as you will need this in the event of warranty/service repair or support. We are unable to carry out warranty/service if you are unable to package it correctly. The safest way to package your item in the event of warranty/service repair is in its original box/packaging.

To receive Freeview channels, in particular Freeview HD channels, you will need a Digital TV aerial and be in a good Freeview coverage area. You can check coverage for your postcode at [www.freeview.co.uk](http://www.freeview.co.uk). Please note that any Freeview HD channels found during tuning will be placed in channel positions above 100. For example, 101 (BBC1 HD) 102 (BBC2 HD) etc.

This product contains technology subject to certain intellectual property rights of Microsoft. Use or distribution of this technology outside of this product is prohibited without the appropriate license(s) from Microsoft. Content owners use Microsoft PlayReady™ content access technology to protect their intellectual property, including copyrighted content. This device uses PlayReady technology to access PlayReady-protected content and/or DRM-protected content. If the device fails to properly enforce restrictions on content usage, content owners may require Microsoft to revoke the device's ability to consume PlayReady-protected content. Revocation should not affect unprotected content or content protected by other content access technologies. Content owners may require you to upgrade PlayReady to access their content. If you decline an upgrade, you will not be able to access content that requires the upgrade.

**Connecting Component/YpPr** - you will need both the Mini YpPr Cable and the Mini Composite/AV Cable. The YpPr cable will be used exclusively for video (red/green/blue) and the AV cable will be used for audio (Red/White while Yellow stays unconnected).

**Mini Composite/AV Cable** Required if you wish to connect a device with AV/Composite/CVBS output to the TV's Mini AV Input

**Mini YpPr Cable** Required if you wish to connect a device with YpPr/Component output to the TV's Mini YpPr Input

**Additional Accessories** Should you wish to connect older/analogue devices to your television, you can purchase the necessary cables either from your retailer or at [www.umc-uk.co.uk/cables](http://www.umc-uk.co.uk/cables)

1 x Quick Start Guide  
1 x Stand installation pack (includes stand base, stand neck & screws)  
1 x Safety Leaflet  
1 x Remote Control & 2 x AAA Batteries

## What is included in the box

**Online Manual** To launch the Online Manual, press the [MENU] button and then select Settings>About TV>Help Information>View Online Manual



If you wish to use your Sky remote to operate the TV's basic functions, you will need a Sky remote control (Revision 9 or later) and you will need to program it with the code 2134. If you wish to use your Sky Q remote to operate the TV's basic functions, you will need to program it with the code 4170.

### Sky Remote Code



- 1 ON/OFF** - Switch on the TV when in standby or vice versa. MUTE - Mute the sound or vice versa.
- 2 NUMBER BUTTONS** - 0-9 to select a TV channel directly. TV GUIDE - Opens the 7 day TV guide (digital TV mode). - To return to the previous channel viewed.
- 3 VOL (+/-)** - To increase/decrease the sound level. PICTURE - Scrolls through picture mode options. SOUND - Scrolls through sound mode options. SOURCE - To display the input/source menu. CH (+/-) - To increase or decrease the channel being watched. MENU - To display OSD menu. EXIT - To exit all menus. (▲/▼/◀/▶/OK) - Allows you to navigate the on-screen menus and adjust the system settings to your preference. BACK - To go back a previous step. FAV - To display favourites menu.
- 4 INFO** - Press once for now/next channel information. - Press twice for information about the current programme. TEXT - To enter/exit Text. SUBTITLE - To switch the dialogue at the bottom of the screen (on/off). TV - To switch to Digital Channels. YOUTUBE - Access the Youtube App. NETFLIX - Access the Netflix App. NET+ - Access the Aqunos NET+ Smart Portal. RECORD/VCD MENU - Access the USB record function/Access the DVD menu of the DVD inserted (must be set to the DVD source). REC LIST/DVD SETUP - Opens the list of previously recorded items/Access the TV's DVD setup menu (must be set to the DVD source). - To restart the current chapter - To advance forward to the next chapter - To stop the playback/Eject Disc (To EJECT the disc press/hold the ■ button for 4 seconds) - To play in fast forward mode - To play/pause - To go to a specific chapter. GOT - To go to a specific chapter. A-B - Press once to set point, press a second time to return to point. ANGLE/3D - Select different angle of DVD. REPEAT - To repeat playback.

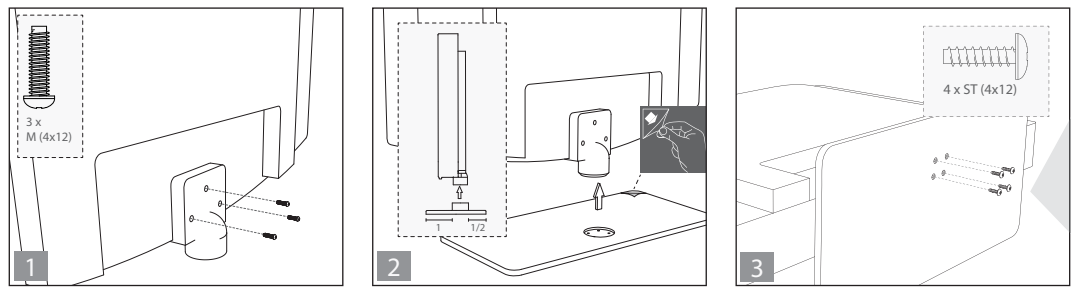
# Setting up the TV set for the first time

To obtain a copy of your Operating Instructions, please go to: [www.umc-uk.co.uk/instruction-manuals/sharp](http://www.umc-uk.co.uk/instruction-manuals/sharp)

## 1 Fitting the stand

For stand installation, there are two types of screws provided as shown below. To complete the stand installation you will require a cross head screw driver. Place the TV set on a flat and clean surface with the panel facing downwards to avoid damage.

- 3 x M (4x12)**  
Used for attaching the stand neck to the TV (fig.1)
- 4 x ST (4x12)**  
Used for attaching the stand base to the stand neck (fig.3)



### HELPFUL ADVICE FOR FIRST TIME STAND INSTALLATION

When securing the self-tapping screw/s into the base of the stand (on first installation) the screw/s will be naturally tight as they create a thread in the plastic of the stand neck in order to support a TV of this size.

- Ensure the cross head screw driver tip fits correctly into the head of the screw and that it is not too big or small.
- Screw in all screws individually and partially before tightening all of the screws fully.
- If they become very tight try loosening them slightly and then re-tightening them once again as this will continue the process of creating the thread for the screws.

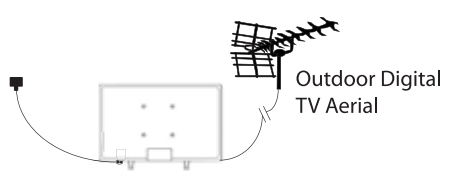
1. (fig.1) Attach the stand neck to the rear of the TV set using the 3 x M(4x12) screw. (fig.2) Peel off the protective plastic cover then attach the stand base to the stand neck. (fig.3) Secure the base to the neck by using the 4 x ST(4x12) screws provided.

## Win a SHARP Soundbar

Register your manufacturers guarantee online within 14 days of purchase at [www.registertoday.co.uk/sharp](http://www.registertoday.co.uk/sharp) and enter into a prize draw to win a Sharp Soundbar. Terms and conditions apply. Online registration only.



## 2 Connecting your set



- Connect the TV to your power socket.
- If you wish to use the TV to receive Freeview/Saorview channels, connect the RF input from the TV to your outdoor Digital TV aerial. If you do not wish to receive Freeview/Saorview, skip this step.

## 3 Installing Batteries



Insert the batteries supplied into the remote control and press the standby button to power on the TV.

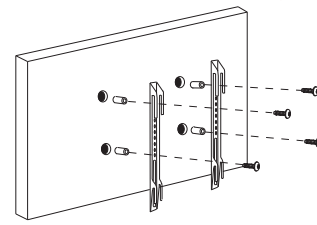
## Button layout

- Stop/Eject DVD\*
- Play/Pause DVD\*
- Volume up and menu right
- Volume down and menu left
- Programme/Channel up and menu up
- Programme/Channel down and menu down
- Displays Menu/OSD
- Displays the input source menu
- Standby Power On/Off



\*For models with built in DVD player

## Wall Mounting the TV



- Remove the four screws that are supplied in the wall mounting holes.
- The wall mount can now be easily attached to the mounting holes on the rear of the TV.
- Install the wall mounting bracket to the television as advised by the bracket manufacturer.

The picture shows the use of spacers, which are not applicable to all sets/installations. For the dimensions of the VESA mounting, please refer to the Technical Specifications section of this document.

## 4 First time installation

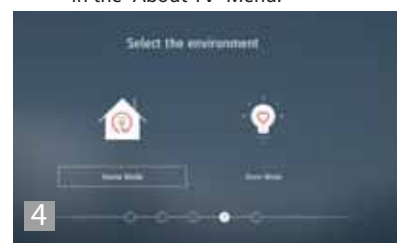
Basic installation steps are shown below. These may vary slightly depending on model.



1 Introduction

When the set first turns on, it enters the First Time Installation mode. This can be restarted by restoring the set to default settings in the 'About TV' Menu.

Note: In home mode, the TV will switch off automatically after 4 hours in the event that no buttons are pressed on the TV or remote control. (You can change this by pressing the [MENU] button and then selecting Settings>Time>Auto Standby)



4 Environment of Use

**Home Mode:** For normal use, by default it is set to a power saving mode which reduces the energy used by up to 25% (by reducing the power to the LED/LCD panel). This can be changed in the picture mode settings.



7 Default Source

Select the source which you use the most. If Digital TV (Freeview) is chosen, then at the next step, the set will tune in and default to Digital TV (Freeview). If one of the other sources is selected, then the set will not tune in at this stage and default to that input. If it is required to tune the set in later, press the [MENU] button and then select Settings>Channels



2 Languages

Select your preferred on-screen display language. This will change the language in which the menus and associated information is displayed in. When set up has been completed, to change this press the [MENU] button and then select Settings > System Menu > Language



5 Network setup

You can connect the TV to your broadband router or wireless network in order to take advantage of the Smart functions. If you connect the TV to your router using an Ethernet cable (recommended) this step will be skipped.



8 Tune in Channels

Choose to install terrestrial channels now or later.



3 Country Selection

Select the correct flag for the country in which the set will be used in. This will enable the set to correctly install the functions applicable in the country of use.



6 Set up Netflix

If you have a Netflix account, it can be set up on the television here. Once set up and validated, the First Time Installation returns to the next step.

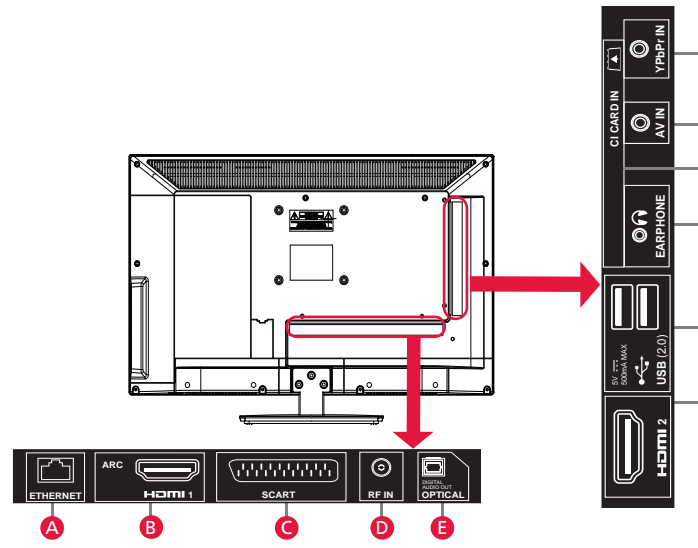


9 Support Advice

Information regarding support is displayed for a little while. Tuning continues and a progress bar is shown with the number of channels found indicated below.

If you are picking up signals from more than one transmitter, you will be requested to select your primary and secondary regions.

## Connectivity



- A** ETHERNET\* Network connection
- B** HDMI 1 (ARC) HDMI input
- C** SCART SCART Input
- D** RF in RF / TV aerial input
- E** Optical Digital Audio Digital Audio Output
- F** HDMI 2 HDMI Input
- G** 2 x USB USB Port
- H** Earphone Earphone Input
- I** CI CARD IN Common Interface module
- J** AV IN Audio/Visual Input
- K** YPbPr HD input (YPbPr)

\* The Ethernet/LAN port is used for Freeview HD services and smart functions.