

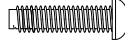


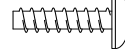
QUICK START GUIDE

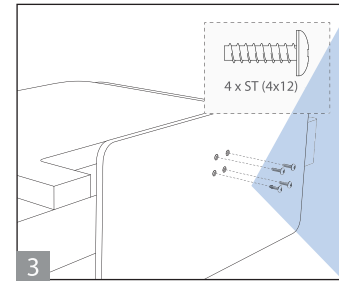
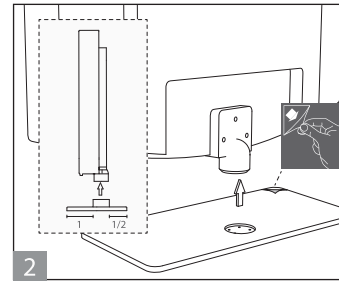
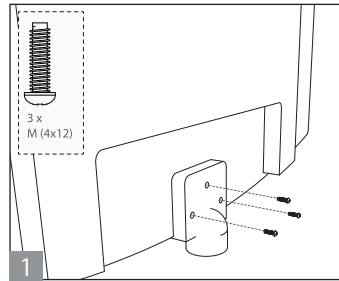
Quick Start Set Up Guide. For full instructions please refer to the user guide (available to download from the website).

For stand installation, there are two types of screws provided as shown below. To complete the stand installation you will require a cross head screw driver.

Place the TV set on a flat and clean surface with the panel facing downwards to avoid damage.

 **3 x M (4x12)**
Used for attaching the stand neck to the TV (fig.1)

 **4 x ST (4x12)**
Used for attaching the stand base to the stand neck (fig.3)

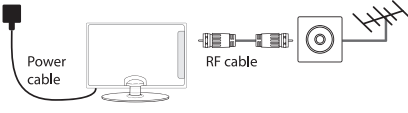


HELPFUL ADVICE FOR FIRST TIME STAND INSTALLATION

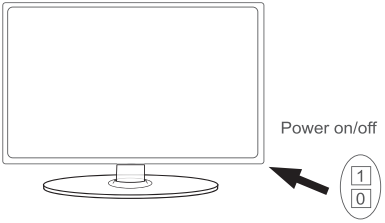
When securing the self-tapping screw/s into the base of the stand (on first installation) the screw/s will be naturally tight as they create a thread in the plastic of the stand neck in order to support a TV of this size.

- a) Ensure the cross head screw driver tip fits correctly into the head of the screw and that it is not too big or small.
- b) Screw in all screws individually and partially before tightening all of the screws fully.
- c) If they become very tight try loosening them slightly and then re-tightening them once again as this will continue the process of creating the thread for the screws.

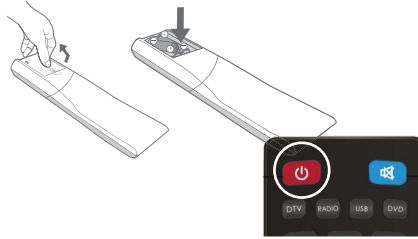
- (fig.1)** Attach the stand neck to the rear of the TV set using the 3 x M(4x12) screw. **(fig.2)** Peel off the protective plastic cover then attach the stand base to the stand neck. **(fig.3)** Secure the base to the neck by using the 4 x ST(4x12) screws provided.



2. Using the RF cable supplied, connect the TV to the TV Aerial wall socket. Connect the power cable to the electrical outlet.



3. Switch on the television using the power on/off switch located on the TV. The red standby light will show.

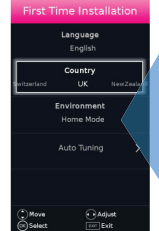


4. Insert the batteries supplied into the remote control and press the standby button to power on the TV.

Information

If you wish to use your Sky remote to operate the TV's functions, you will need a Sky remote control (Revision 9 or later) and you will need to program it with the code **2134**.

For further information please refer to the user guide section 'Using your TV with a Sky Digital set top box'.

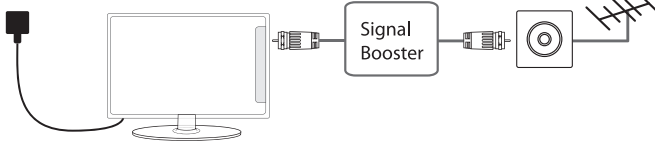



HOME MODE is a power saving mode which reduces the energy used by up to 25% (by reducing the power to the LED/LCD panel).

When in **STORE MODE** the picture will be brighter and you can personalise the settings within the picture settings menu (Contrast, Brightness, Colour etc).

NOTE: In Home Mode, the TV will switch itself to Standby mode after 4-5 hours in the event that the TV buttons or remote control buttons are not pressed.

5. You will be welcomed with the first time installation screen. Select your chosen options and press OK on the remote control and tuning will begin.



6. If the TV finds some, but not all of the channels you would expect to receive, this is because the signal being received by the TV is inadequate. In most circumstances, this can be corrected with the simple addition of a Signal Booster between the TV and the TV aerial wall socket, as shown. Once the signal booster is connected, retune the TV in order to receive all of the channels.



To receive Freeview channels, in particular Freeview HD channels, you will need a Digital TV aerial and be in a good Freeview coverage area. You can check coverage for your postcode at www.freeview.co.uk.

Please note that any Freeview HD channels found during tuning will be placed in channel positions above 100. For example, 101 (BBC1 HD) 102 (BBC2 HD) etc.

Hotline: UK. 0871 097 1160 ROI. 01443 3940 | **Internet:** www.umc-uk.co.uk
Model Number: 236/2070-GB-3B-EGPS, 236/2070-GB-3B-EGDPS
UK: Calls cost 12p per minute plus your phone company's access charge. **ROI:** Calls are charged at a local rate.

