



Technical Specification

Product fiche	
Trademark	Technika
Model ID	24A23B-HD
Energy efficiency class	A
Visible screen size (diagonal)	24" / 60 cm
On-mode power consumption	21.0 W
Annual energy consumption *1	31 kWh
Standby power consumption *2	<0.50W
Off mode power consumption	N/A
Screen resolution	1366 (H) x 768 (V)

*1: Energy consumption XYZ kWh per year, based on the power consumption of the television operating 4 hours per day for 365 days. The actual energy consumption will depend on how the television is used.
*2: When the TV is turned off with the remote control/standby button and no function is active.

24A23B-HD	
RF	75 ohm Antenna / Analog / DVB / Satellite
Inputs	2 x HDMI, 2 x USB, 1 x RJ45 LAN/Ethernet, 1x CVBS/Video input, 1x Mini Component/YpbPr input, 1 x L/R Audio input for Composite/CVBS & Component YPbPr, 1x Micro SD card reader
Sound Outputs	1 x Digital Optical Audio output, 1 x 3.5mm Headphone
Speaker/ Amplifier Watts (RMS)	2 x 5 / 2 x 3
Voltage and power consumption	AC 220V ~ 240V; 50Hz 21/40W (ecomode/max) (0.5W in Standby)
Dimensions including stand (mm)	560W x 386H x 140D
Net weight (Kgs)	4.3
Wall Mounting	VESA 100 x 100 (mm)

HDMI The terms HDMI, HDMI High-Definition Multimedia Interface, and the HDMI Logo are trademarks or registered trademarks of HDMI Licensing Administrator, Inc.

androidtv Google, Google Play, YouTube, Android TV and other marks are trademarks of Google LLC.

Dolby Audio Manufactured under license from Dolby Laboratories. Dolby, Dolby Audio, and the double-D symbol are trademarks of Dolby Laboratories Licensing Corporation.



androidtv

Quick Start Set Up Guide

For information on using the TV's features, please refer to the Operating Instructions. (Available online to download.)

Model Numbers
24A23B-HD

Quick & easy guide for setting up your TV

What is included in the box
Using the remote control
Setting up the TV for the first time - including attaching the stand
Connecting other devices to the Television

Need help setting up or using your TV?

Please contact the UK & ROI Helpline*
Telephone UK: 0330 024 0804 or ROI 01443 3940
Online support at: www.umc-uk.co.uk
Email support at: service@umc-uk.co.uk

*Calls to 0330 numbers are charged at standard call rates and are included as part of any bundled minutes with your phone provider.
Calls to the ROI number are charged at the local call rate.
The telephone opening hours are:

Monday to Friday: 8.30am - 6pm.
Saturday: 9am - 5pm.
Bank Holidays: 10am - 4pm.

Closed Christmas and New Years day



Please save your box/packaging as you will need this in the event of warranty/service repair or support. We are unable to carry out warranty/service if you are unable to package it correctly. The safest way to package your item in the event of warranty/service repair is in its original box/packaging.

Freewiew Play brings together live TV viewing with "catch up" TV services such as BBC iPlayer, ITV Player, More4 and Demand 5. The Freewiew Play Explore app features a carousel of genres to select from when searching for programmes, such as sport, comedy, dramas and soaps, etc. Content is made up from recommendations of the major broadcasters and offers an alternative means of searching.

Note that to use the full functionality of Freewiew Play your set must be connected to the internet.

This product contains technology subject to certain intellectual property rights of Microsoft. Use or distribution of this technology outside of this product is prohibited without the appropriate license(s) from Microsoft. Content owners use Microsoft PlayReady™ content access technology to protect their intellectual property, including copyrighted content. This device uses PlayReady technology to access PlayReady-protected content and/or WMDRM-protected content. If the device fails to properly enforce restrictions on content usage, content owners may require Microsoft to revoke the device's ability to consume PlayReady-protected content. Revocation should not affect unprotected content or content protected by other content access technologies. Content owners may require you to upgrade PlayReady to access their content. If you decline an upgrade, you will not be able to access content that requires the upgrade.

- Accessories**
- Included with this TV are the following accessories
- 1 x Quick Start Guide
 - 1 x Remote Control and 2 x AAA Batteries
 - 1 x Safety Leaflet
 - 1 x RF Cable
 - 1 x Mini YPbPr Cable
 - Required if you wish to connect a device with YPbPr/Component output to the TV's Mini YPbPr Input
 - 1 x Stand installation pack (includes stand base, stand neck & screws)

What is included in the box

Online Manual

To launch the online manual, press the HOME button, select Apps from the Home menu, and select "E-Instruction Manual" from the apps list.

Sky Remote Code

If you wish to use your Sky remote to operate the TV's basic functions, you will need a Sky remote control (Revision 9 or later) and you will need to program it with the code 2134. If you wish to use your Sky Q remote to operate the TV's basic functions, you will need to program it with the code 4170.



- 1** STANDBY - Switch on the TV when in standby or vice versa. By long pressing of this button, the set will display a menu offering power down option to energy saving standby mode
- 2** SOURCE - To display the input/source menu.
- 3** NUMBER BUTTONS - 0-9 to select a TV channel directly.
- 4** TV GUIDE - Opens the 7 day TV guide (digital TV mode).
- 5** VOL (+/-) - To increase/decrease the sound level.
- 6** The Google Assistant - Use your voice to access entertainment, control smart devices, obtain answers on screen, and more.
- 7** HOME - Display the TV Home Menu.
- 8** CH (+/-) - To increase or decrease the channel being watched.
- 9** MENU - Display LIVE TV menu. This button works only in sources (TV, HDMI, Component, etc.). It will not work in the Home Menu.
- 10** INFO - Press once for now/next channel information.
- 11** (A/V/+/OK) - Allows you to navigate the on-screen menus and adjust the system settings to your preference.
- 12** BACK - To go back a previous step.
- 13** EXIT - To exit all menus.
- 14** NETFLIX - Access the Netflix App.
- 15** Prime video - Access the Prime video App.
- 16** YouTube - Access the Youtube App.
- 17** Freewiew Play - Access the Freewiew Play app.
- 18** MTS - Opens audio track menu.
- 19** TEXT - To switch the dialogue at the bottom of the screen (on/off).
- 20** SUB - To switch the dialogue at the bottom of the screen (on/off).
- 21** TV - To switch to Live TV.
- 22** MI - To play/pause media
- 23** To play in fast forward mode
- 24** To play in fast rewind mode
- 25** To stop the playback
- 26** COLOUR BUTTONS - Execute corresponding function at that time

For multimedia playback

Setting up the TV set for the first time

To obtain a copy of your Operating Instructions, please go to: www.umc-uk.co.uk/Manuals/Technika.php

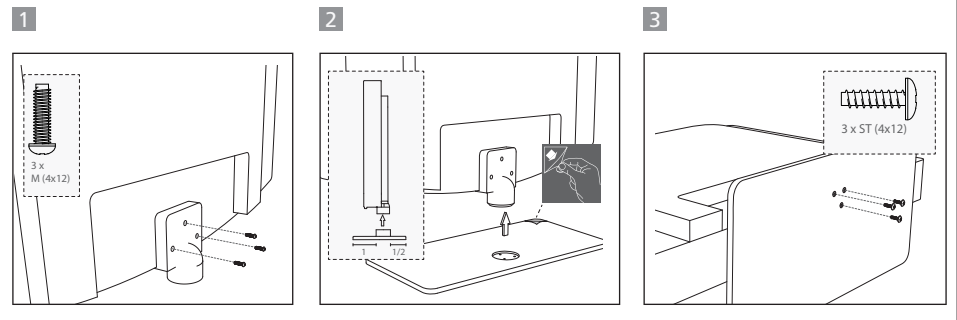
1 Fitting the stand

Follow steps 1 - 3 to safely install the TV stand

For stand installation, there are two types of screws provided as shown below. To complete the stand installation you will require a cross head screw driver.

Place the TV set on a flat and clean surface with the panel facing downwards to avoid damage.

- 3 x M (4x12)**
Used for attaching the stand neck to the TV (fig.1)
- 3 x ST (4x12)**
Used for attaching the stand base to the stand neck (fig.3)

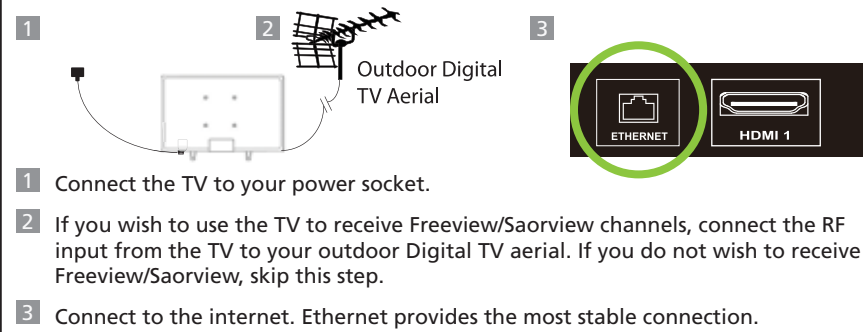


2 Installing batteries



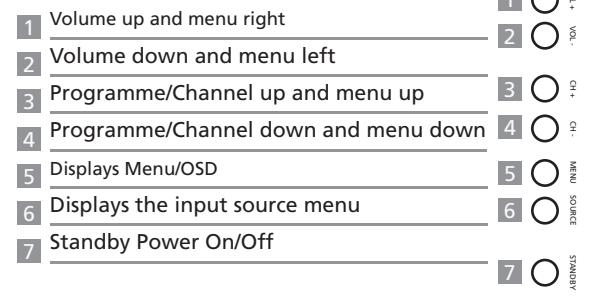
Remove the battery cover from the rear of the remote control and insert the AAA batteries which are supplied in the accessory pack. Ensure that the polarity of the batteries is as shown in the battery compartment. Replace the battery cover. The remote control is ready for use.

3 Connecting your set



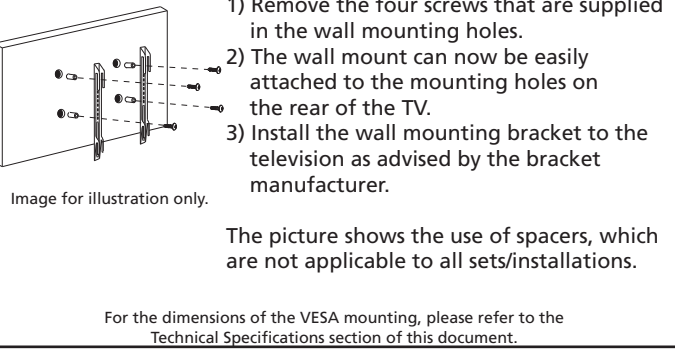
- Connect the TV to your power socket.
- If you wish to use the TV to receive Freeview/Saorview channels, connect the RF input from the TV to your outdoor Digital TV aerial. If you do not wish to receive Freeview/Saorview, skip this step.
- Connect to the internet. Ethernet provides the most stable connection.

4 Button layout



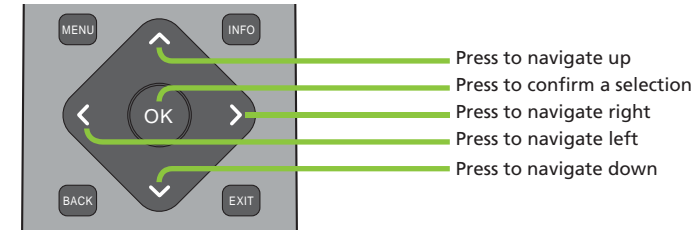
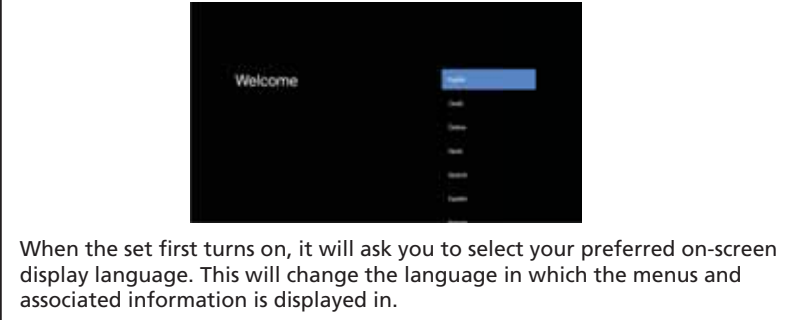
5 Wall Mounting the TV

Optional



6 First time installation

Basic installation steps are shown below. These may vary slightly depending on your model. Due to Android software updates, the look and feel of the TV start up procedure and subsequent menus can be subject to change.



Android Phone users
During the set-up process, you will be prompted to sign-in to your Google account using your pre-installed "Google" app. This set up process will depend upon which model TV you are setting up. Please ensure you have your account details to hand.

7 Pairing the remote

If during the first time installation process the remote was not paired or skipped, then follow the process below to pair your remote with the television.

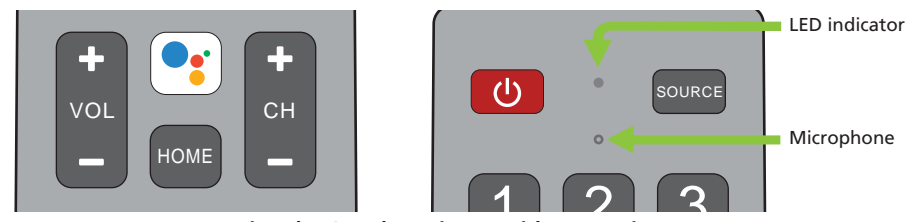
- Turn the set on.
- Press the button on the remote control.
- The LED indicator on the remote will illuminate and the pairing screen will appear on the TV.
- Now press and hold the "Left" and "Home" buttons on the remote simultaneously.



- The LED indicator on the remote control will start to flash.
- Select the detected remote control shown on the screen and press OK.
- Once paired the pairing screen will disappear.

This process will only need to be carried out if the remote is not paired. Once paired, when the button is pressed it will open the Google Assistant screen on the set and activate voice functionality.

8 The Google Assistant



Using the Google Assistant with your voice

Remote controls with the Google Assistant have a Google Assistant dedicated button and a built-in microphone. To use this feature with the Google Assistant remote control, follow the instructions as below.

- Before using the Google Assistant, you will need to pair the remote. Please follow step 5 of this guide to pair your remote to enable the Google Assistant.
 - Press the button. The LED indicator on the remote control will illuminate.
 - Wait for the on-screen message from the Google Assistant, then speak into the microphone. A good rule of thumb is to have the microphone positioned about 15-30 centimetres away from your mouth.
- By speaking into the microphone, you can search for various content or control your connected smart home devices. Speech examples may be displayed on the television screen depending on your model.

Register your product online within 14 days of purchase and get 6 months extra guarantee for FREE at:
www.umc-uk.co.uk/free6

Registration must be performed online

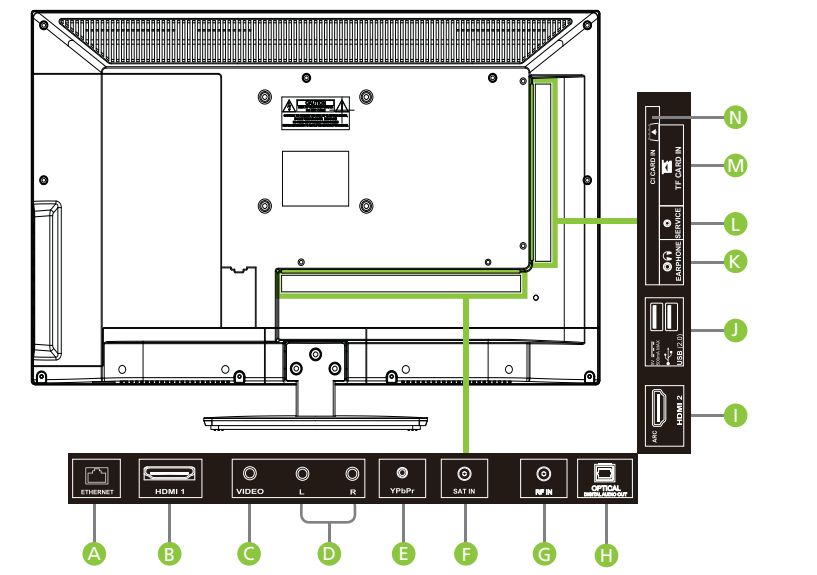
Please have your proof of purchase/receipt as well as the model/ref and serial number to hand as you will need this during registration. You can find the model/ref and serial number either on the box/packaging or on the label on the rear of the TV.



The small print...
This offer is ONLY available online.
Register your product at www.umc-uk.co.uk/free6 within 14 days of purchase and you will receive an extra 6 months manufacturers guarantee FREE of charge, giving you 18 months instead of the usual 12 months

Connectivity

Use this connectivity guide to identify the location of the TV's inputs and outputs.



A	LAN*	Network Connection	H	Optical	Optical Digital Audio Out
B	Digital audio	HDMI input	I	HDMI 2	HDMI input (ARC)
C	Video	Composite/CVBS in	J	USB 2.0	USB 2.0 input x2
D	L/R	Audio shared for Composite/CVBS and Component/YPbPr	K	Earphone**	Earphones input
E	Mini YPbPr in	HD input (YPbPr)	L	Service Port	For service
F	SAT in	Satellite input	M	TF Card in	input for TF Cards
G	RF in	RF/TV Aerial input	N	CI Card in	Common Interface Module

* The Ethernet/LAN port is used for Freeview HD services and smart functions.
** Cannot be used for Line Out signals